

**DANISH  
INDUSTRIAL  
LOCOMOTIVES.**



Peter Roland Hansen  
Birkevang 32 Vitrum

Text by Jean Monod, 21 Kensington Church Street, W.8.  
Illustrations by Hans Jolly Ltd., 9 Blenheim Street, W.1.  
Obtainable from D. Cole, 30 Beardsale Villas, London, W.8.  
and published by International Transport Publications at  
the same address.  
Recent revised & illustrated edition July 1951  
First edition July 1928



First edition July 1958  
Second revised & illustrated edition July 1961

Obtainable from D. Cole, 30 Scarsdale Villas, London, W.8.  
and published by International Transport Publications at  
the same address.

Illustrations by Susan Tully Ltd., 9 Blenheim Street, W.1.

Text by Jean McDougall, 31 Kensington Church Street, W.8.

FOREWORD

It is now possible to produce a much expanded booklet, brought up to date, extensively corrected, illustrated, and doubled in content, dealing with Danish industrial and contractors' locomotives.

In some cases little or nothing is known of the work done by the engines and some entries may merely be the names of agents: however, such doubtful items have been included in the hope that further information will lead to certainty.

Acknowledgement for much help is gratefully made to the late Dipl. Ing. Schmeiser: to the Birmingham Locomotive Club (Industrial Locomotive Information Section): to De Danske Sukkerfabriker A/S and Københavns Frihavn A/S: and to the following individuals: Messrs. P. Adamsen, W. Bay, A. Gregersen, R.H. Inness, S. Jørgensen, O.W. Laursen, G.S. Moore, and J. Steffensen. I am also grateful to the photographers, whose names are acknowledged, for allowing their work to be reproduced.

D.C.

NOTES

The gauge of each line is given in metres.

Abbreviations for manufacturers:

- AB Andrew Barclay Sons & Co, Glasgow.
- Bag. W. & G. Bagnall, Stafford.
- Bors. A. Borsig, Berlin-Tegel, Germany.
- Chem. Saxische Maschinfabrik, Chemnitz, Germany (R. Hartmann).
- Cock. Soc. John Cockerill, Seraing, Belgium.
- Czesko. Czeskomorawska, Czecho-slovakia.
- Essl. Esslingen Locof., Germany.
- FJ Fletcher, Jennings & Co., Whitehaven.
- Freud. Freudenstein.
- Hagans Hagans, Erfurt, Germany.
- Hann. Hannoversche Maschinenbau A G, Germany.
- HC Hudswell Clarke & Co. Ltd., Leeds.
- Hens. Henschel & Sohn, Cassel, Germany.
- HL R. & W. Hawthorn, Leslie & Co., Newcastle.
- Hoh. Hohenzoffern A G., Dusseldorf, Germany.
- Jung Arn. Jung, Jungenthal, Germany.
- Kr. Locof. Krauss & Co. A G, Munich & Linz.
- Maff. J. Maffei, Munich, Germany.
- Mar. Maribo, Denmark.
- N Neilson Reid & Co., Glasgow.
- O&K Orenstein & Koppel, Berlin, Germany.



RS Rt. Stephenson & Co, Newcastle.  
 WrN Weiner Neustadt, Austria.  
 Zobel Zobel, Bromberg, Poland.

## Other abbreviations:

DJK Dansk Jernbane Klub.  
 GDS Gribskovbanen.  
 HHGB Helsingør-Hornbaek-Gilleleje B.  
 NFJ Nordfynske J.  
 VLTJ Vemb-Lemvig-Thyborøn J.  
 ØSJS Østsjaellands J.

s/s scrapped or sold at some unknown date.

ILLUSTRATIONS between pages 6 & 7.

1. De Danske Sukkerfabriker, Assens, 8. (Ulf Holtrup)
2. " " " Højbygaard, 1. (O.W.Laursen)
3. " " " Sakskjøbing, B2. (O.W.Laursen)
4. " " " " C4. (Erik V.Pedersen)
5. Det Danske Staalvalsevaerket 4. (Ulf Holtrup)
6. Faxe Kalkbruk 2 (James Steffensen)
7. Frederiksholm Tegl.- o. kalkverk 8. (Svend Jørgensen)
8. Aktieselskabet Hedehusene, Krauss 7036. (H.Jørgensen)
9. Kryolitselskabet Øresund 3. (James Steffensen)
10. Københavns Belysningvaesen, Østre Gasverk, 2. (D.Cole)
11. " " Valby Gasverk, 2. (Paul Adamsen)
12. Sukkerfabriken Nykøbing 2. (O.W.Laursen)

Aars-Nibe-Svendstrup, J, contractor for, c. 1898. (Jutland). 1.435

3 Thy 0.4.OST AB (?) s/s

M. Andersen. 0.785

0.4.OF Hens. 12940 1914 s/s

" " 12941 " to Hoffmann 1

" " 12942 " s/s

Andersen & Cordes, contractors. 1.435

4.4.OF Jung 332 1898 x Fjerritslev-Frederikshavn  
 J.7,'22

Blcm & Hvidt, contract at Slagelse (Fyn). 1.435

0.4.OF Jung 82 1890 s/s

Bodal Torvefabrik, peat works, Assentorp, Stenlille. (Zealand)  
 1.435

0.6.OF Hens. 11564 1912 x Brodersen '44

Bogedal-Christianshede Mergelb. (Jutland). n.g.

0.6.OF O&K 9653 1921

Brehner Larsen & Agger. 0.785.

0.4.OF Hens. 10567 1911 to Hoffmann 8

Brodersen, (contractor for aerodrome at Karup?) Esbjerg. (Jutland)  
 1.435

0.6.OF O&K 448 1899 x GDS 7,'41, to Frederiksvaerk '48

" Hens. 11564 1912 " 8, " to Bodal Torvefabrik,  
 '44.

2.6.OF Cock. 2514 1906 x ØSJS 7,'40 to NFJ 4,'48.

Christiani & Nielsen, contractors, København. (Zealand). 1.435.

0.4.OST Chem. 1928 1893 x State 376,'33, s.'40.

P. Cohrt, Aarhus. (Jutland). 0.750.

0.4.OF Jung 2187 1914 to Vestrup, '14.

" " 2254 " to Wright Thomson & Kier.

Dania cement works, Hadsund (Jutland). 0.785

Tine 0.4.OF Kr. 8477 1929 x Portland Cement A/S, '34.

De Danske Hedeselskabet (Peat bog railways). 0.700

0.4.OF Jung 1816 1912

" " 1817 "

" " 1818 "

" " 1842 "

" " 1844 "

" " 1848 "

" " 2200 1914

" " 2270 1916

De Danske Sukkerfabriker, (Sugar beet factories)

(i) Assens (Fyn) 0.700. Closed 1960.

1 0.8.OF Hens. 9995 1910

2 " " 9996 "



## (i) Assens (continued)

3	0.8.OT	Hens.	9997	1910	
4	"	"	9998	"	s/s by '60
5	"	"	10020	"	
6	"	"	10021	"	s/s by '60
7	"	"	18449	1921	to Sakskjøbing DA7, '23
8	"	Bors.	11505	1922	x Salbrovad '46
9	"	"	11506	"	" " "

## (ii) Gørlev. (Zealand). 1.435 (7) &amp; 0.700 (remainder). Closed 1960

1	0.8.OT	Jung	1795	1912	s. '61
2	"	"	1797	"	s. '61
3	"	"	1794	"	s. '61
4	"	"	1796	"	to Sakskjøbing 4, '61.
5	"	"	1980	1913	s. '61
6	"	O&K	5844	1912	s. '61
7	0.4.OST	FJ	123	1874	x State 59, '12, w'33, s'35.
7	"	Essl.	1311	1873	" 364, '33, s'39
7	2.4.OT	Hens.	20049	1924	x Stubbekjøbing-Nykjøbing-Nysted B.8, '39
C5	0.6.OT	"	9993	1910	x Sakskjøbing C5, '60, s. '61

## (iii) Højbygaard or Holeby. (Lolland) 0.700. Closed 1961

1	0.6.OT	Bag.	1440	1894	s. '58
2	"	"	1686	1902	s.
3	"	"	1784	1905	s.
4	"	Hens.	9991	1910	x. Sakskjøbing C3. s.
6	0.6.2T	Kr.	3592	1897	x Maribo B2. s. '61
7	"	"	6801	1913	" B3. to DJK 1961
B5	0.6.OT	O&K	9350	1920	" " B5, '60 to Sakskjøbing B5, '61

## (iv) Maribo (Lolland) 0.700

B1	0.6.2T	Kr.	3591	1897	s.
B2	"	"	3592	"	to Højbygaard 6
B3	"	"	6801	1913	" 7
B4	"	"	6622	1912	s.
B5	0.6.OT	O&K	9350	1920	to Højbygaard B5, '60.

## (v) Nakskov. (Lolland) 0.700

1	0.6.OT	Hens.	10841	1911	
2	"	"	10842	"	

## (v) Nakskov (continued)

3	0.8.OT	Hens.	10688	1911	x Sakskjøbing DA 3 (?) s/s by '60
4	0.6.OT	"	9989	1910	" Cl.
5	0.8.OT	"	12321	1913	
6	0.6.OT	"	9994	1910	x Sakskjøbing C6. (?)
7	"	"	9999	"	s. '59

## (vi) Odense. (Fyn) 1.435

1	0.4.OT	Hann.	3195	1898	x Høxter Kleinbahn l.c'05, s. '60
1	"	"	7482	1917	x State 102, '49, s. '50.

## (vii) Sakskjøbing. (Lolland) 0.700.

B1.	0.6.OT	O&K	10597	1923	
B2	0.6.2T	"	11420	1927	
Cl.	0.6.OT	Hens.	9989	1910	to Nakskov 4.
C2	"	"	9990	"	s. '59
C3	"	"	9991	"	to Højbygaard 4.
C4	"	"	9992	"	
C5	"	"	9993	"	to Gørlev. '60.
C6	"	"	9994	"	to Nakskov 6. (?)
DA1	0.8.OT	"	10686	1911	
DA2	"	"	10687	"	
DA3	"	"	10688	"	to Nakskov 3. (?)
DA4	"	"	10689	"	
DA5	"	"	10880	"	(?) s/s
DA6	"	"	12321	1913	(?) s/s
DA7	"	"	18449	1921	x Assens 7, '23
B5	0.6.OT	O&K	9350	1920	x Højbygaard B5, '61.
4	0.8.OT	Jung	1796	1912	x Gørlev 4, '61.

Det Danske Staalvalsevaerket, Frederiksvaerk. (Zealand).

## (i) 1.435

	0.6.OT	Bors.	5261	1903	x Kaas '47. s.
	"	O&K	448	1899	x Brodersen '48, s. '58
	2.4.OT	Hens.	10694	1911	x Kolding Sydbaner 4, '51, s
	"	Maff.	2525	1906	x HHGB 1, '51, s. '52
	2.6.OT	NoH	1081	1916	" 5, " s. '58
	"	"	1082	"	" 6 " s. '52
	0.6.OT	Mar.	18	1905	x GDS 3, '52.
5	"	Hens.	9881	1910	" 4 "
2	0.8.OT	Bors.	4471	1895	x ØSJS 6, '53 to DJK '61
4	0.4.OT	Hens.	10564	1911	x Hedehusene '55



## (i) 1.435 (continued)

10	0.4.OT	Maff.	1903	1898	x State	399, '56
11	"	N	4750	1894	"	381 "
	"	Hens.	9542	1909	x Lollandske	J.13, '58
23	"	"	21452	1929	"	23, "
	"	Kr.	6989	1915	x Hedehusene	'61.

## (ii) 0.900

	0.4.OT	O&K	4747	1911	x Karlsten	'48, s. '57
	"	"	5136	"	"	" s. '58
	0.4.OWT	Maff.	4002	1919	x Frederiksholm	7, '56
	"	"	4003	"	"	8, '58
	0.4.OT	O&K	6824	1915	"	6 " :to DJK '60

Farum Sten u. Grusk. A/S, stone quarries. (Zealand) 1.435

	0.4.OT	Kr.	2381	1890	x VLTJ	3, '10, w. '48
--	--------	-----	------	------	--------	----------------

Faxe Kalkbruk. (Faxe J.) (Zealand) 0.785

I	2.4.2T	WrN		1855	for Oberschleischisches Smals-	purb., x a German coal mine
					'66, s/s.	
II	0.4.OT	Kr.	342	1874		
III	0.6.OT	Chem.	1988	1894	s.c.	'30.
IV	0.6.2T	Kr.	5599	1907		
V	"	"	6951	1914		
VI	0.4.OT	Hens.	16421	1920		
I	0.6.2T	Kr.	8388	1926		

J.T.Fenger, contractor, 0.785

	0.4.OT	Hann	5880	1909	x A.Neilsen, to Fibiger &	Villefrance.
--	--------	------	------	------	---------------------------	--------------

Fibiger & Villefrance, contractors

## (i) 1.435

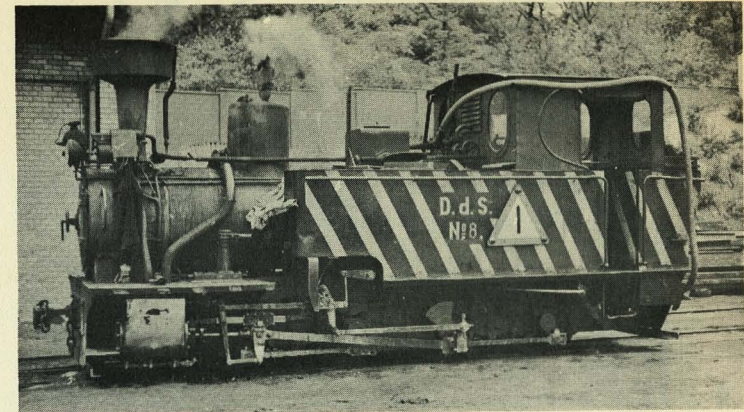
	0.4.2	RS	1899	1868	x State	39, '14. s.
	"	"	1902	"	"	42, '10, s. '13 (?)

## (ii) 0.785 (Nykoebing)

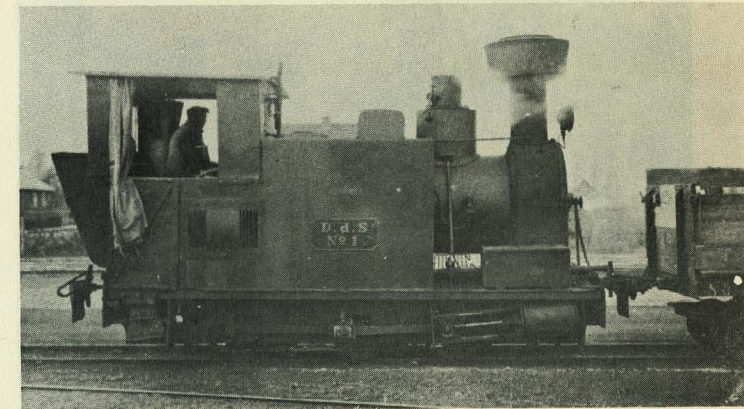
	0.4.OT	Hann.	5772	1909	s/s	
	"	"	5773	"	s/s	
	"	"	5880	"	x Fenger, to C.Jensen	c. '34.

## (iii) 0.600

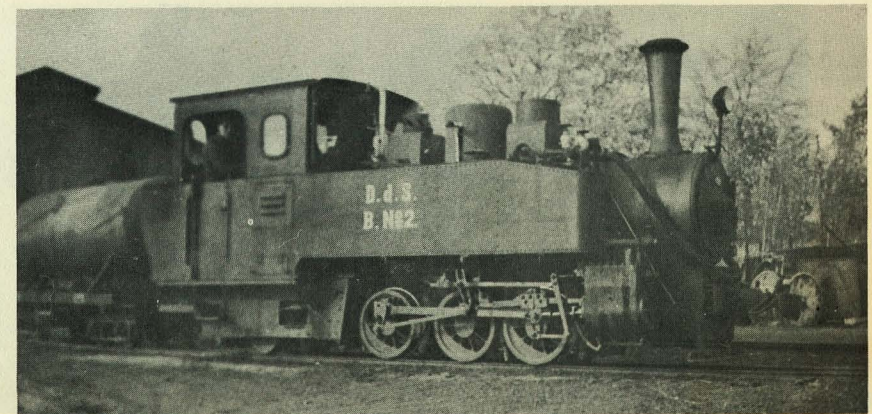
	0.4.OT	Hann.	5048	1909	s/s	
--	--------	-------	------	------	-----	--



1

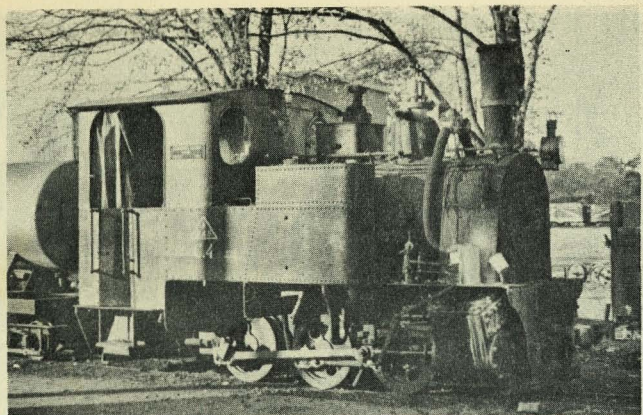


2

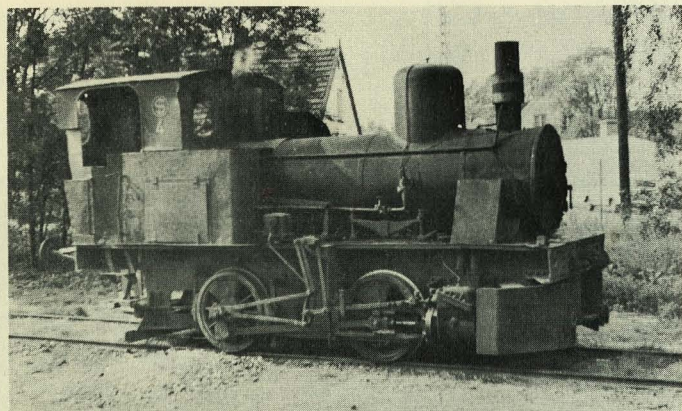


3

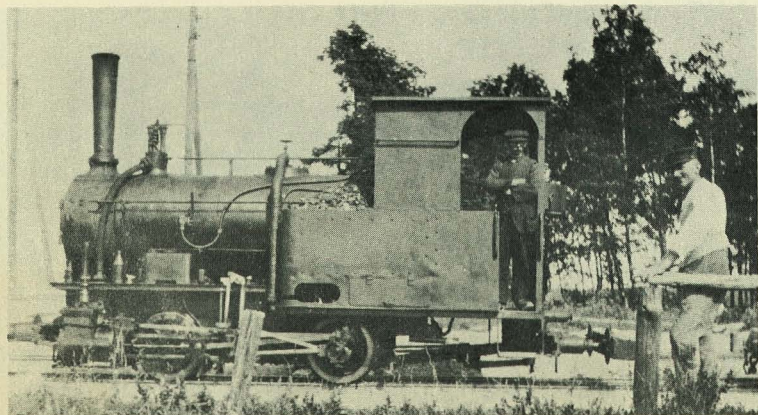




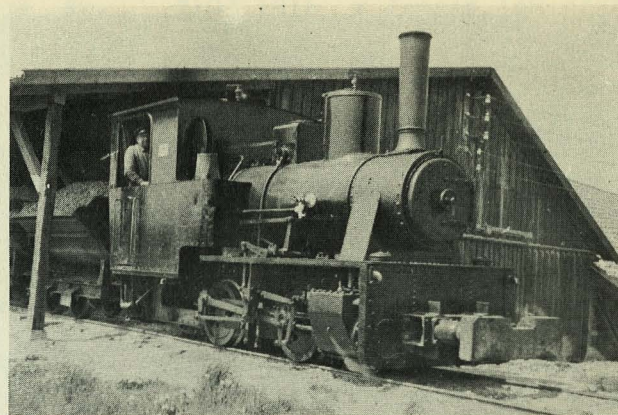
4



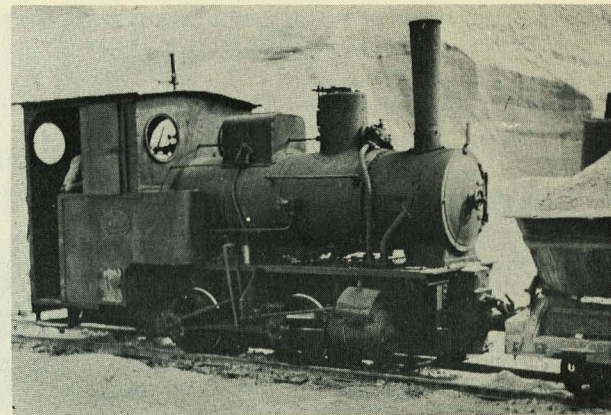
5



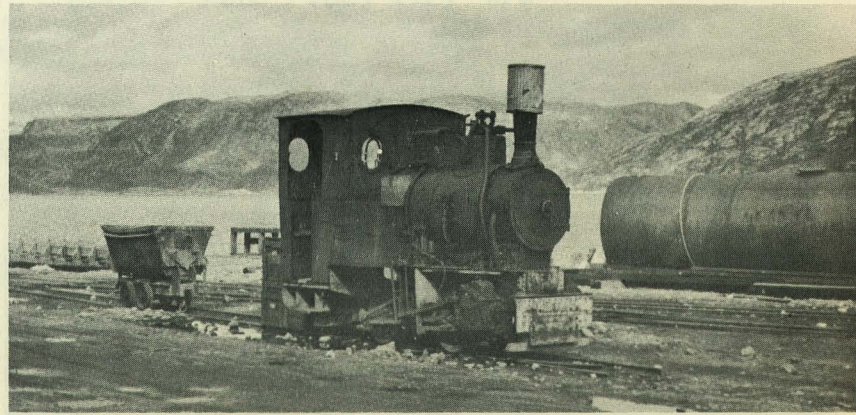
6



7

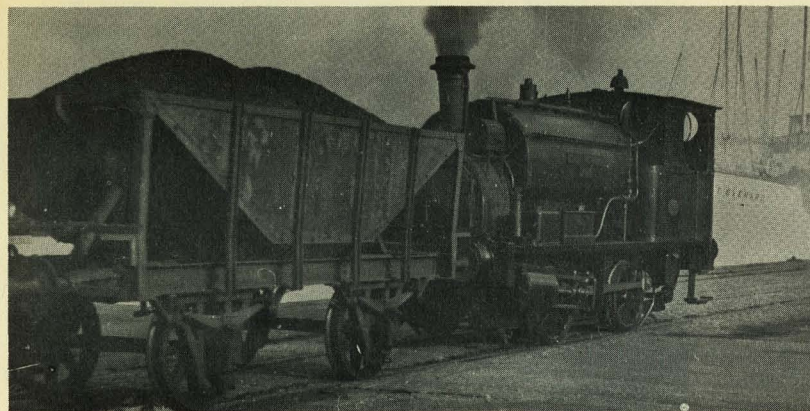


8

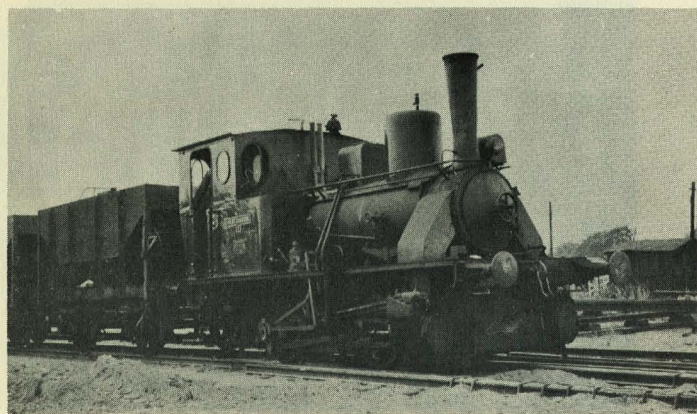


9

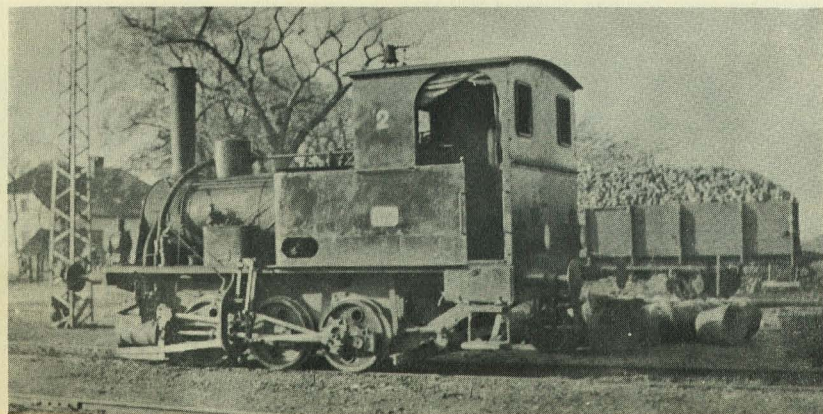




10



11



12

Fiskbaek Briketfabrik, nr.Farum. (Zealand) 0.785

0.4.OT Kr. 7193 1916 x Jensen '48 s/s'57  
 Frederiksholm Tegl - o. Kalkvaerk (Zealand). Brickworks.

(i) Frederiksholm Teglvaerk 1871-1918, closed.

1					s/s
2					s/s
3					s/s

(ii) Blaustrød Teglvaerk 0.820. closed.

4	0.4.OT	Jung	617	1902	x ? s/s.c.'54
5					s/s

(iii) Hammersholt Teglvaerk, nr.Hillerød. 0.900 (0.785 before 1919)

6	0.4.OT	O&K	6824	1915	to Frederiksvaerk '58.
7	0.4.OWT	Maff.	4002	1919	" '56.
8	"	"	4003	"	" '58.

Frederiksvaerk, see Det Danske Stålvalsevaerket.

Futter & Hirsch. 0.900.

0.4.OT	Hens.	16946		to Wright Thomson & Kier
"	"	16947		s/s

Gummerson & Hoffman, contractors for Viborg-Aalestrup line  
 (Jutland). 1.435.

0.4.OT	Jung	106	1891	s/s
--------	------	-----	------	-----

Hammfog Mergel A/S (?) 0.785

0.4.OT	Jung	2029	1913	s/s
--------	------	------	------	-----

Hannings sogns mergelselskab. 1913-8

no details.

Hansen & Ramboll, contractors. 1.435

RGJ. 5	0.4.4T	Hoh.	201	1922	x Ryomgaard-Gjerrild.B.5,'16,
					to Neilsen '23.

Aktieselskabet Hedehusene, quarry owners, etc. Hedehusene.  
 (Zealand).

(i) 1.435

0.4.OT	Hann.	2154	1890	x GDS IV,'09,s'35.
Dan	"	Hens.	10564	1911 to Frederiksvaerk '55.



## (i) 1.435 (continued)

Thor 0.4.OT Jung 209 1895 x P.Madsen '15, to Sturup & Prosch-Jensen '38.  
Skjold " Kr. 6989 1915 x Rasmussen & Schwarz, to Frederiksvaerk '61.

## (ii) 0.785

0.4.OT O&K 9791 1924 s.'56  
" Jung 2165 1914 s/s.'50  
" Kr. 7036 1915 x Rasmussen & Schwartz, to Teknisk Museum. '60.  
" " 7035 " s.'56  
" Hann. 5757 1910 x Watzold & Jørgensen, s.'56.

Hoffmann, Hansen & Co., later Hoffmann & Sons, contractors.

## (i) Aarhus (Jutland). 0.785

1 0.4.OT Hens. 12941 1914 x M.Andersen  
3 " " 11210 1912 x Milling  
5 " Kr. 6845 1914 x H., Aalestrup.  
7 " Hens. 25423 1943  
8 " " 10567 1911 x Brehner Larsen & Agger.  
9 " " 17819 1921  
" Kr. 6262 1910 x Werner  
" " 6623 1912  
" "

## (ii) Aalestrup (Jutland). 0.785

0.4.OT Kr. 6845 1914 to H., Aarhus, 5

## (iii) Aarhus (Jutland). 0.900

0.4.OT Hens. 3636 1892 x Johannsen.  
" Hann. 5774 1909

## (iv) Vejrupgaard, Bramminge (Jutland). 1.435

0.4.OT Hann. 4743 1910 s/s

## F. Hoyer &amp; Co., Gram (Jutland) 0.750

0.4.OT Maff. 3680 1912 to Wright Thomson & Kier.

## Carl Jensen, contractor, Kolding. (Jutland). 0.785

0.4.OT Kr. 7193 1916 to Fiskebaek Briketf. '48.  
" " 7583 1920 x F.Krupp, Essen, Germany, 62.

## Carl Jensen (continued)

0.4.OT Hann 5880 1909 x Fibiger & Villefrance c.'34  
to Karlsten c'40

## Johannsen, København. (Zealand) 0.900

0.4.OT Hens. 3636 1892 to Hoffmann

## Kaas Brickettfabrik. (Jutland) 1.435

0.6.OT Bors. 5261 1903 x Aalborg Privatbaner 18,'41,  
to Frederiksvaerk, '48.

## Karlsten, contractor.

## (i) Randers (Jutland). 0.900

0.4.OT O&K 4747 1911 x ?, to Frederiksvaerk '48  
" " 5136 " x ?, " "

## (ii) contract at Troldhede (Jutland), and brown coal pits. 0.785

0.4.OT Hann 5880 1909 x C.Jensen c.'40, s.'53.

## Knabstrup Teglvaerk.nr.Holbaek. (Zealand). 1.435

0.4.OT Hann. 9267 1924 Rt. with diesel engine.

## Kryolitselskabet Øresund, Kryolite mines, Ivigtut (Greenland).0.600

3 0.4.OT Hens. 17497 1920 x Nørre Smedeby 3

## Københavns Belysningvaesen, (Copenhagen Gas undertaking),(Zealand)

## (i) Østre Gasverk. 1.435

1 0.4.OST HC 498 1899  
2 " " 499 "  
3 " " 622 1902

## (ii) Valby Gasverk. 1.435 (1-6) &amp; 0.600 (Bag.). To be closed 1963.

1 0.4.OWT Hann. 4725 1906  
2 " " 4726 "  
3 " " 4727 "  
4 2.4.OT " 6641 1883 x NFJ 4,'15, s/s.  
4 0.4.OT Essl. 1891 1882 x Sydfynske J.27,'18 s,'35.  
5 0.4.OT O&K 10247 1928  
6 " N 4751 1894 x State 382, '32. w.'61  
0.4.OST Bag. 1845 1907 x.'48, to Teknisk Museum.

## Københavns Frihavn. (Zealand) 1.435

1 0.4.OT N 4754 1894 s/s c.'33



## Københavns Frihavn (continued)

2 0.4.OT N. 4857 1895 s/s c.'133  
 3 " Chem. 2309 1897 " "  
 4 0.4.OT O&K 8320 s.'136

Lowener, København. (Zealand). 1.200

0.4.OT Maff. 3908 1914 s/s

P.Madsen, contractor, harbour works, København, (Zealand). 1.435

Thor 0.4.OT Jung 209 1895 to Hedehusene, '15.

Madsen, Winkler & Werner, contractors.

(i) København. (Zealand), construction of København-Slangerup B.,  
 1904-7. 0.785.

0.4.OT Kr. 5208 1904 to Vandbygningsdirektoratet 5.  
 " " 4998 " s/s

(ii) Viborg. (Jutland) 0.760 (?)

0.4.OT Kr. 5280 1904

Magle mølle, paper mill, Naestved (Zealand). 1.435

2.4.OT Kr. 2381 1890 x VNTJ 6, '40.

Malling Mergellege. (Jutland) 0.750

0.4.OT Jung 2187 1914 x M.Pedersen '24, to Wright  
 Thomson & Kier '26.

Milling, København. (Zealand) 0.785

0.4.OT Hens. 11210 1912 to Hoffmann & Sons 3.

N.C.Monberg, contractor.

Rosa T Hagans 261 1892 s/s

A.Neilsen, contractor. 0.785

0.4.OT Hann. 5880 1910 x Rasmussen & Schwartz, to  
 J.T.Fenger.

Carl Neilsen, contractor, Fruens Bøge, Odense, (Fyn). 1.435.

0.4.2 Essel. 2316 1889 x Varde-Nørre Nebel-Tarm 7,  
 '26, s.'28.

N.Neilsen, contractor, Hellerup, (Zealand). 1.435.

RGGJ 5. 0.4.4T Hoh. 201 1882 x Hansen & Rambøll '23, s.'28.

Nørre Smedeby Stenbruk & Skaervefabrik, quarry owner.

(i) 1.435

2.4.OT HL 1613 1874 x State 73, '23, s.'28.

(ii) 0.600

Hann. s/s

Zobel s/s

3 0.4.OT Hens. 17497 1920 to Kryolites. Øresund 3.  
 Freud.  
 O&K

Ch. Pedersen, Maribo (Lolland). 0.700

0.4.OT Jung 1595 1910 s/s

" " 1598 " s/s

M.Pedersen, contractor, Odense (Fyn). 0.750

0.4.OT Jung 2187 1914 x Petri & Haugsted '21, to  
 Malling '24.

A.S.Petersen, contractor. 1.435

1 } no information  
 2 }

3 0.4.OST HC 456 1896 s/s

Petersen & Frimolt, København (Zealand) 0.810

0.4.OT Jung 17 1886 s/s

Petri & Haugsted, contractors

(i) København, (Zealand) 1.435

0.4.OST FJ 141 1875 x State 82, '13, to Stürup &  
 Prosch-Jensen '24.

(ii) Construction of Hørve-Vaerslev & Mid-Zealand Railways. 0.785

0.4.OT Hann. 5758 1911 s/s

(iii) 0.750

0.4.OT Jung 2187 1914 x Vestrup Mergellege c'18 to  
 M.Pedersen '21.

Portland Cement A/S, Nørresundby, nr.Aalborg (Jutland) 0.785

0.4.OT Kr. 5881 1907

" " 5882 "



## Portland Cement A/S, (continued)

0.4.OT	Kr.	6190	1910	
"	"	6462	1911	
"	"	6764	1913	
"	"	6990	1916	
"	"	6991	"	
"	"	8046	1922	
"	"	8201	1923	to Wright Thomson & Kier 9.
"	"	8477	1929	to Dania Cement Works '34.

(It is not clear whether these locomotives belonged to the above firm or to another unknown company of the same name).

## Raimann &amp; Engqvist, København. (Zealand). 0.900

0.4.OT	Kr.	7120	1915	s/s
--------	-----	------	------	-----

Rangerstation i Valby (Industrial estate near Copenhagen)  
(Zealand) 1.435

0.4.OT				x ?, '20 s/s '27.
Jakob	0.4.OST FJ	142	1875	x Sydhavnsarealerne, '27, s. '37.
186	0.4.OT Essl.	2874	1897	x State, 186, '37

## Rasmussen &amp; Schwartz, contractors.

## (i) Køge-Ringsted line (Zealand). 1.435

0.4.OT	Kr.	6989	1916	to Hedehusene.
--------	-----	------	------	----------------

## (ii) 0.900

0.4.OT	Kr.	6985	1914	s/s
--------	-----	------	------	-----

## (iii) 0.785

0.4.OT	Kr.	7036	1915	to Hedehusene.
"	Hann.	5880	1910	to A. Neilsen.

## Regstrup Mergelbane, nr. Holbaek. (Zealand)

0.4.OT	O&K			s/s
--------	-----	--	--	-----

## V. Røssel, Dansk Kedelindustri, København. (Zealand). 1.435

0.4.OT	Maff.	1138	1877	x Vestjyllands Mergelf. '40, s. '41.
--------	-------	------	------	--------------------------------------

## Sæbge &amp; Leiche, Contractors, Aarhus. (Jutland) 1.435

0.4.OT	Hann.	4573	1906	s/s
--------	-------	------	------	-----

## Salbrovad Saftstation A/S, Assens. (Fyn). 0.700, closed 1946.

0.8.OT	Bors.	11505	1922	to DDS Assens 8, '46.
"	"	11506	"	" " 9 "

## Statens Vildmosetilsyn, Tylstrup. (Jutland. 0.700.

0.4.OT	O&K	9459	1921	
"	"	9224	"	to Teknisk Museum.
T	Hens.			

## Stttrup &amp; Prosch-Jensen, contractors, 1.435.

0.4.OST	FJ	141	1875	x Petri & Haugsted '24, s. '33.
0.4.OT	Jung	209	1895	x Hedehusene '38, s. '53.

Sukkerfabriken Nykøbing Limited, Beet Sugar factory, Nykøbing  
Falster. 1.435.

2	0.6.OT	Kr.	761	1879	x ØSJS 2, '11
3	"	"	759	1878	" 3, "

Svavlsyrefabriken A/S, Sulphuric Acid works, Nørresundby.  
(Jutland). 0.785.

1	0.4.OT	Jung	2070	1914	
2	"	"	2074	"	
3	"	"	2075	"	s/s
	"	"	3391	1927	

Sydhavnsarealerne, South harbour areas land reclamation scheme,  
København (Zealand) 1.435

0.4.OST	FJ	142	1875	x State 83, '18, to Rangerstation i Valby '27.
---------	----	-----	------	---

## Sørensen &amp; Andersen. 1.000

0.4.OT	Jung	217	1895	s/s
--------	------	-----	------	-----

## Vandbygningsdirektoratet, København (Zealand) (Waterworks). 0.785.

5	0.4.OT	Kr.	5208	1904	x Madsen Winkler & Werner.
---	--------	-----	------	------	----------------------------

## Vandbygningstjenesten, Lemvig (Jutland)

one tank loco.

## Vejstrup Mergellege. (Fyn) 0.750

0.4.OT	Jung	2187	1914	x Cohrt '14, to Petri & Haugsted c. '18
--------	------	------	------	--

Vestjyllands Mergelforsyning, Marl suppliers, Klaabygaard,  
nr. Ringkøbing. (Jutland).

## (i) 1.435

1	0.4.OT	Maff.	1141	1877	x State 102, '10 s'34.
2	"	"	1139	"	" 100 '20
3	"	"	1138	"	" 99 '21 to Røssel, '40.

## (ii) 0.700

0.4.OT	Jung	1771	1911	
--------	------	------	------	--

## Watzold &amp; Jørgensen, København. (Zealand). n.g.

0.4.OT	Jung	2270	1916	s/s 0.700 (?)
--------	------	------	------	---------------



0.4.OT Hann 5757 1910 0.785. To Hedehusene.

Werner, contractor, København. (Zealand)

(i) 1.435

0.6.OT Kr. 6376 1910 to Amagerbanen 6, '16.

(ii) 0.785

0.4.OT " 6261 1910 s/s

" " 6262 " to Hoffmann.

Wright Thomson & Kier, contractors, Aarhus. (Jutland) n.g.

Czesko. 6087

0.4.OT Hann. 7183 1914 0.750 x ?

" Maff. 3580 1913 0.750 x Hoyer.

" Zobel 623

" Freud. 163

O&K 3167

" 4091

" 4880

" 7086

0.4.OT Jung 2187 1914 0.750 x Malling '26, s/s. '56

" " 2254 " 0.750 x Cohrt, s/s.

Jumbo " Hens. 16946 0.900 x Futter & Hirsch.

7 Kr.

9 0.4.OT " 8201 1923 0.785 x Portland Cement A/S, s. '56

Samson "

The following locomotives cannot be traced further:-

0.4.OT Jung 1485 1910 1.000 Delivered to Denmark

" " 1507 1910 0.600 "

" " 1513 1911 " "

" " 1284 " " "

0.6.OT Borsig 4817 1900 1.435 x Lyngby-Vedbaek J.1 to cont, '37

" " 4818 " " " 2 " '32

" " 4819 " " " 3 " '26

" Essl. 1892 1882 1.435 x NFJ 2, to contractor, '15

" Hann. 1438 1879 " x VLTJ 1, " '98

" " 1439 " " " 2, " ,00

" " 1440 " " " 3, " ,190

2.4.OT O&K 1899 " " " 1, " ,127

N1512  
K 7.50



