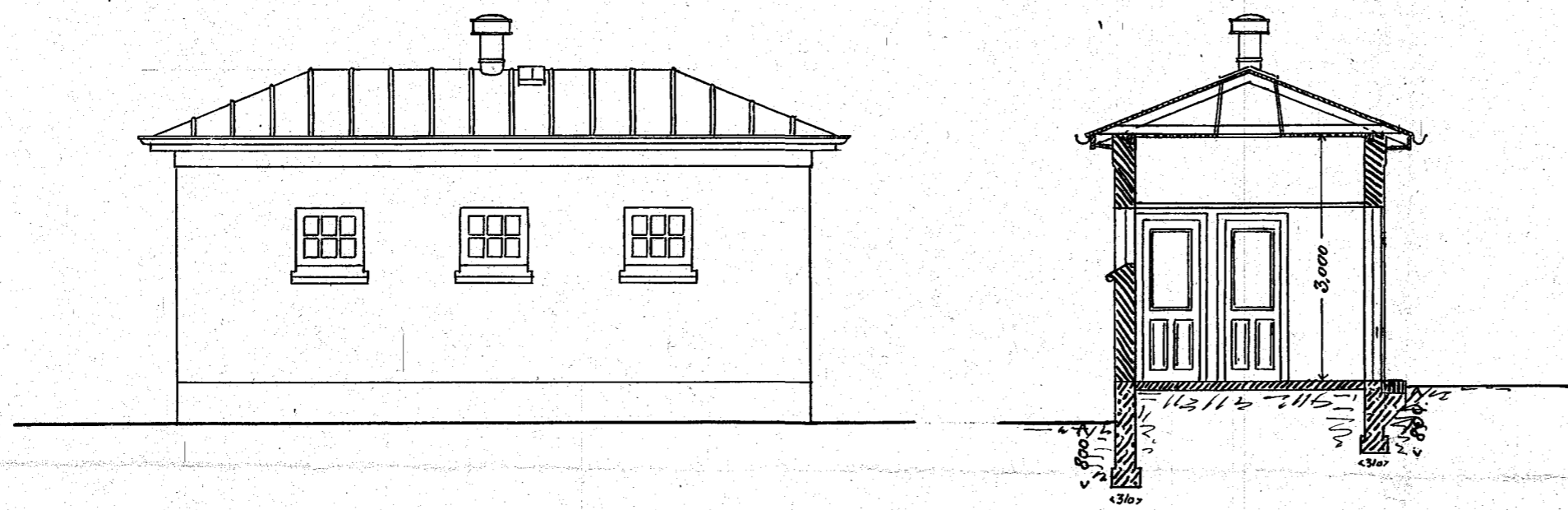


Ombygning af Søllerød Station.

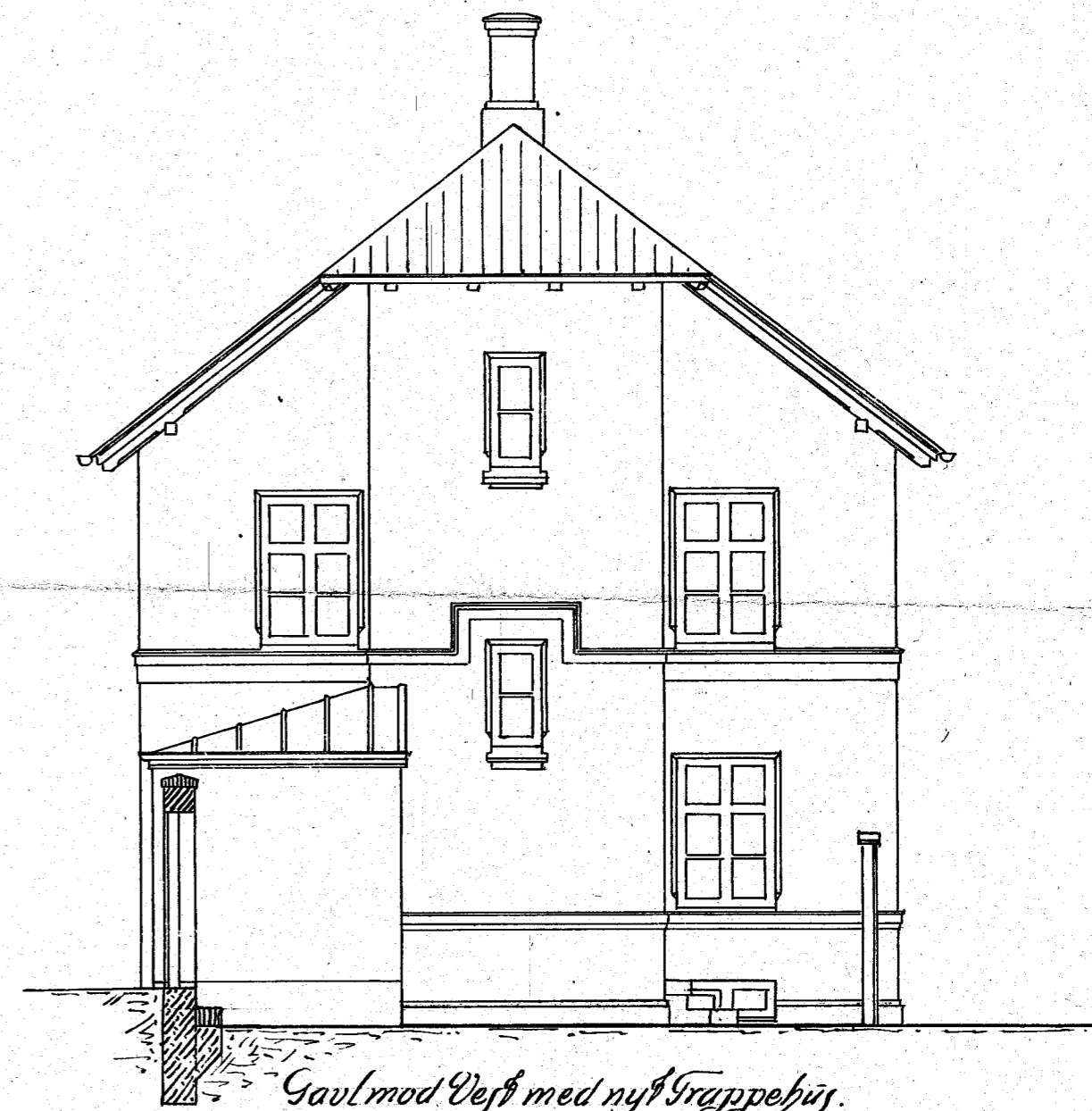
No. X
1912

Bl. 1.

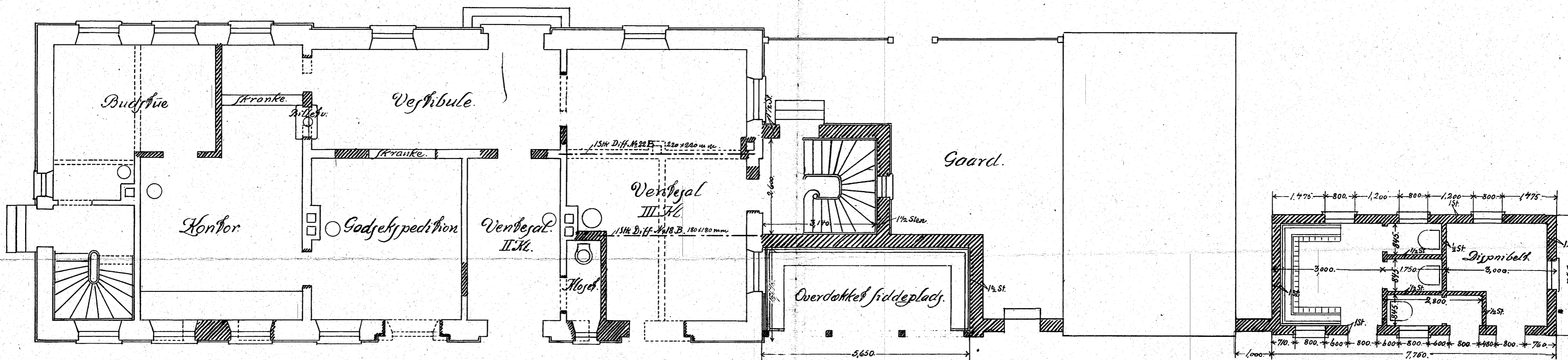
Udhus.



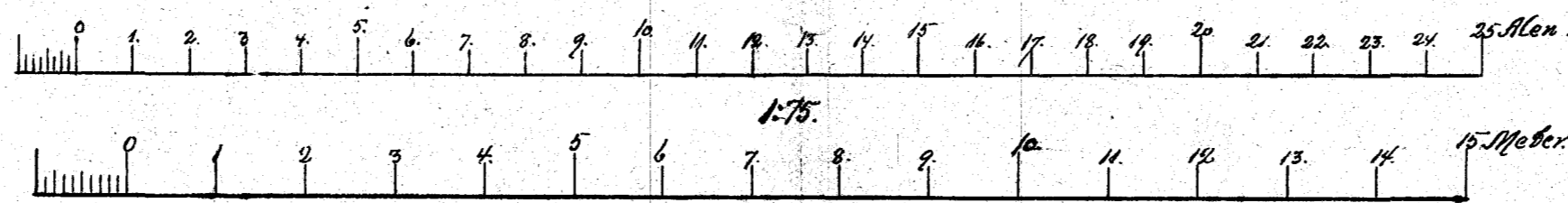
Facade mod Perronen.



Gaul mod Vest med nyt Trappehus.



De skraverede Partier angiver nyt Arbejde.
De punkterede Linier angiver nedbrudte eller ændrede Partier.



Nybygning p. d. Juni 1912
for Architekt H.C. Glahn
Jørg Petersen