

*Mat Ab*

JERNBANESKOLEN

Marts 1960

VEJLEDNING

i

kendskab til den elektriske togbelysning m.m.

=====

TEGNINGER

-----oooOooo-----

*Elektrikerens.*



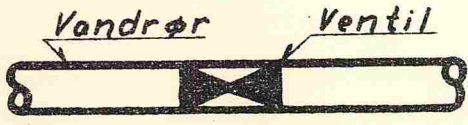


Fig 1.

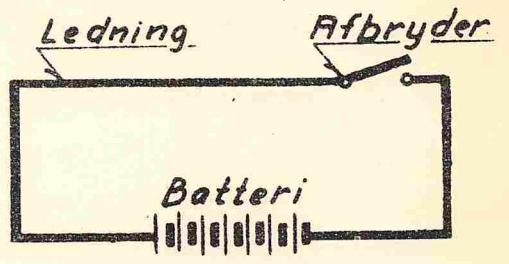


Fig 2.

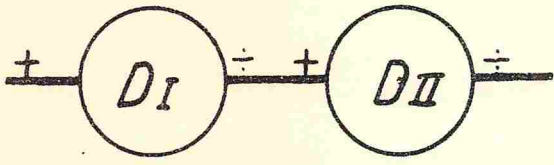


Fig 3.

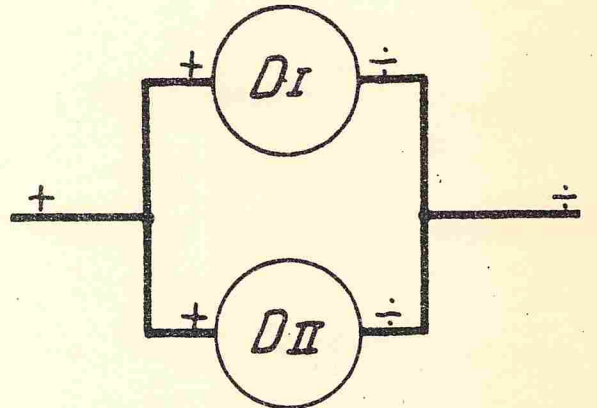


Fig 4.

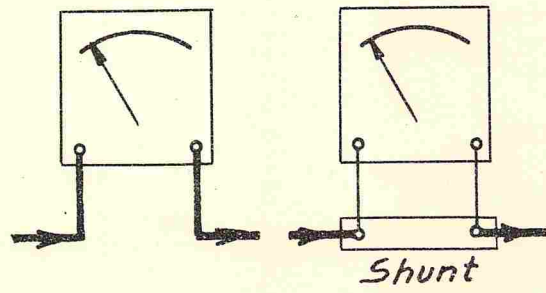


Fig 5.

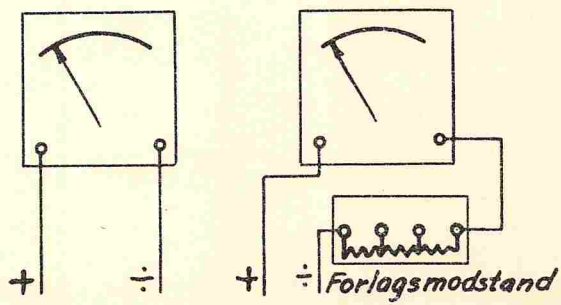


Fig 6.

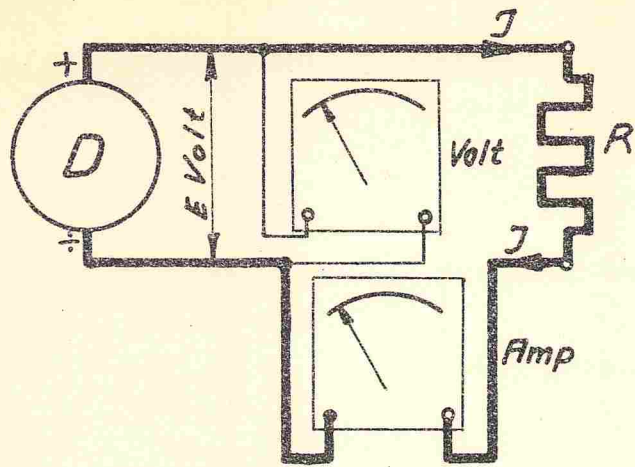


Fig 7.

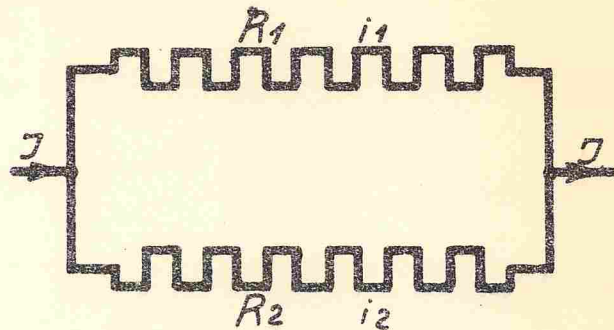


Fig 8.

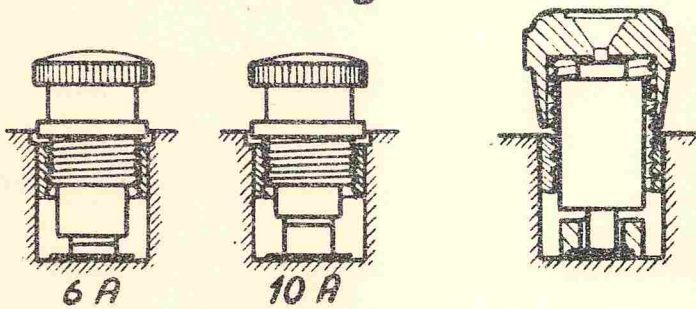


Fig 9.

Fig 10.

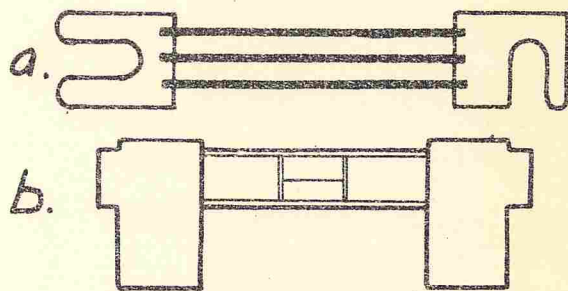


Fig 11.

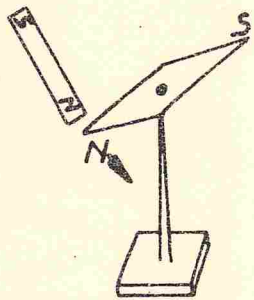


Fig 12.

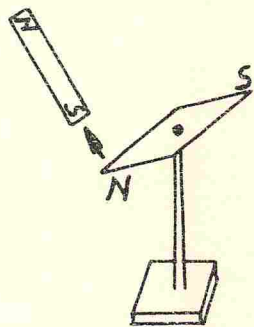


Fig 13.

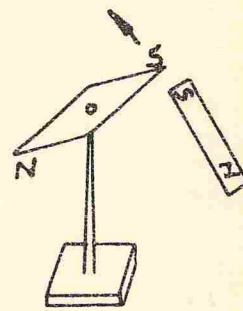


Fig 14.

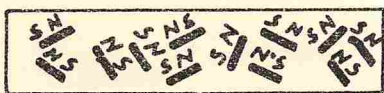


Fig 15.



Fig 16.



Fig 17.

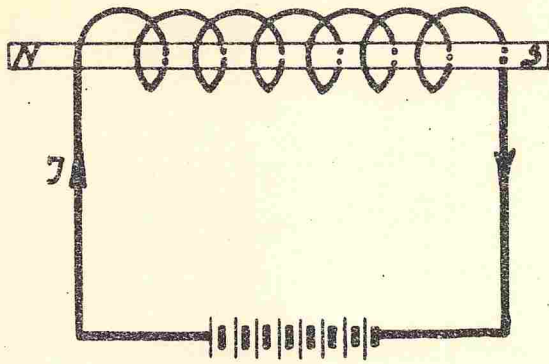


Fig 18.

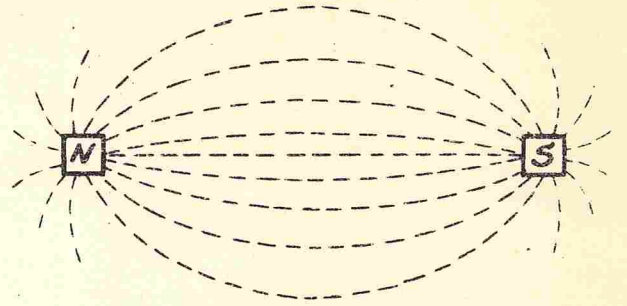


Fig 19.

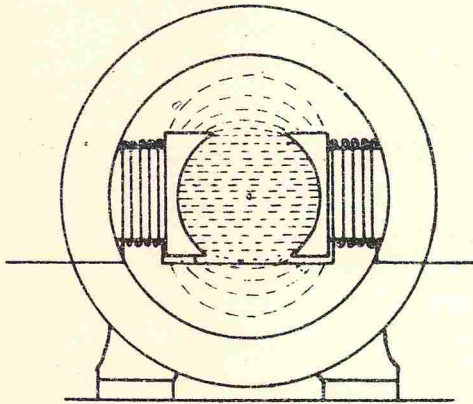


Fig 20

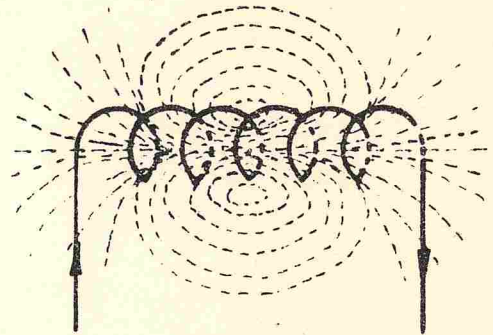


Fig 21.

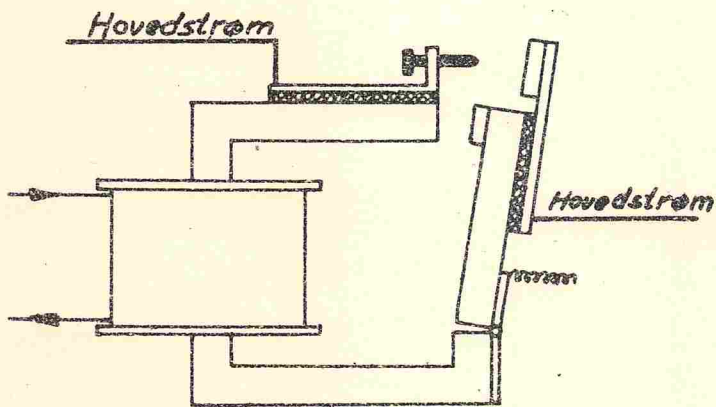


Fig 22.

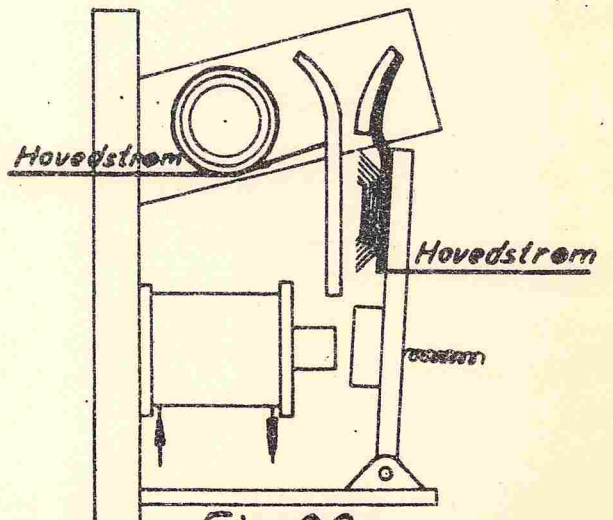


Fig 23.



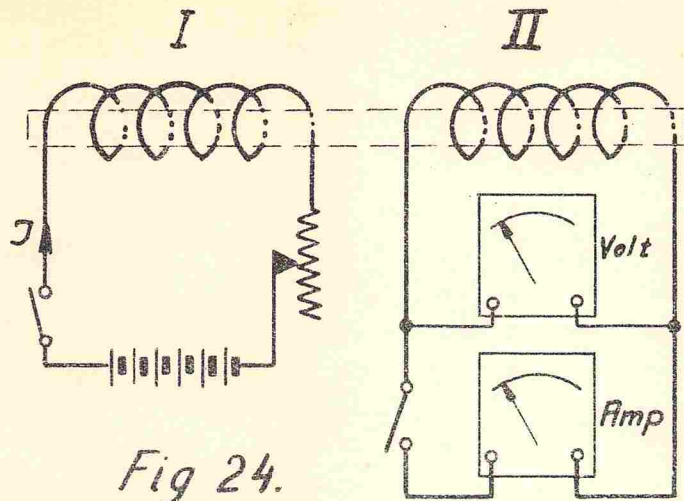


Fig 24.

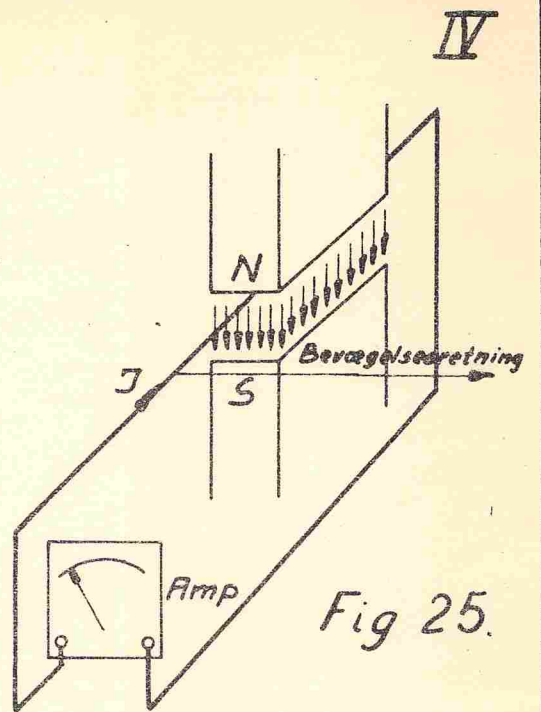


Fig 25.

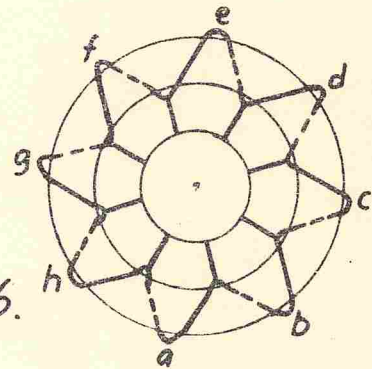
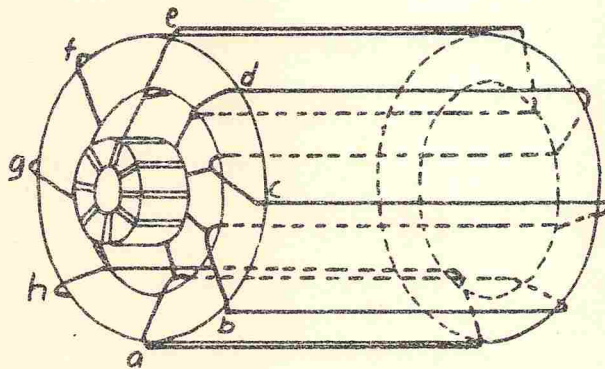


Fig 26.

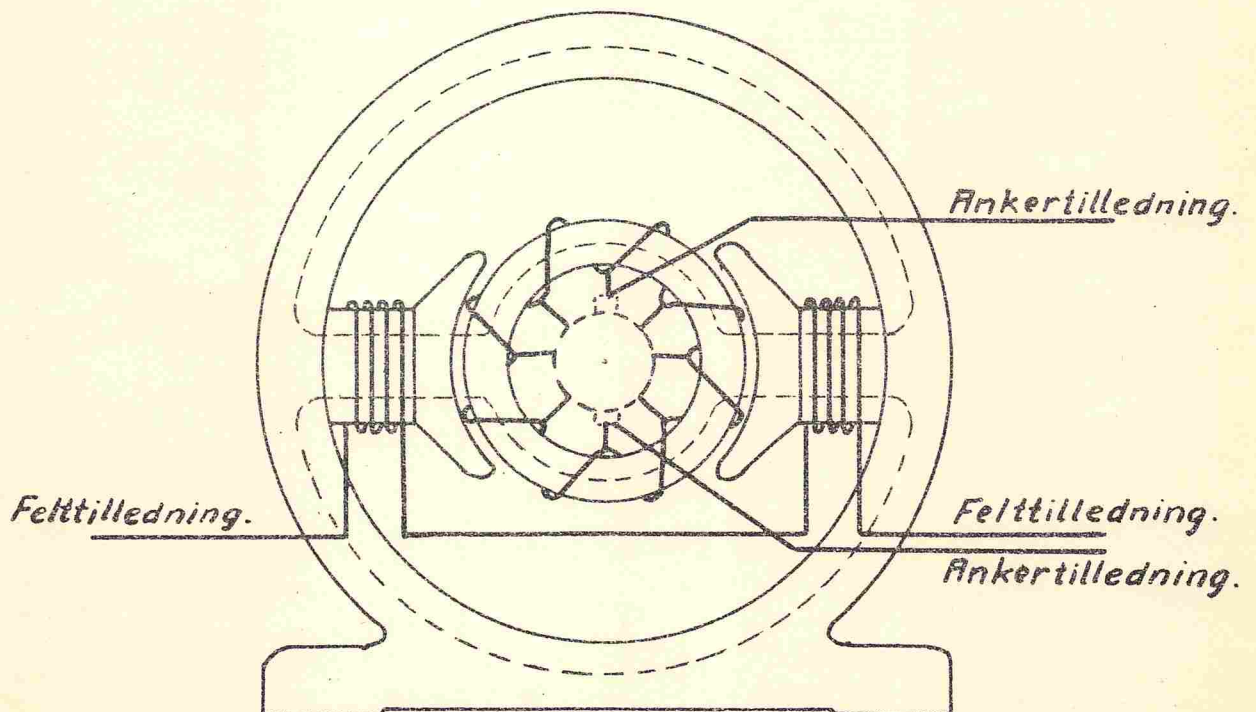


Fig 27.

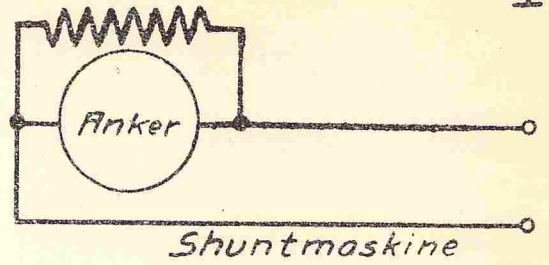
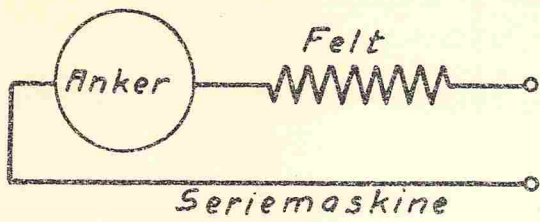


Fig 28.

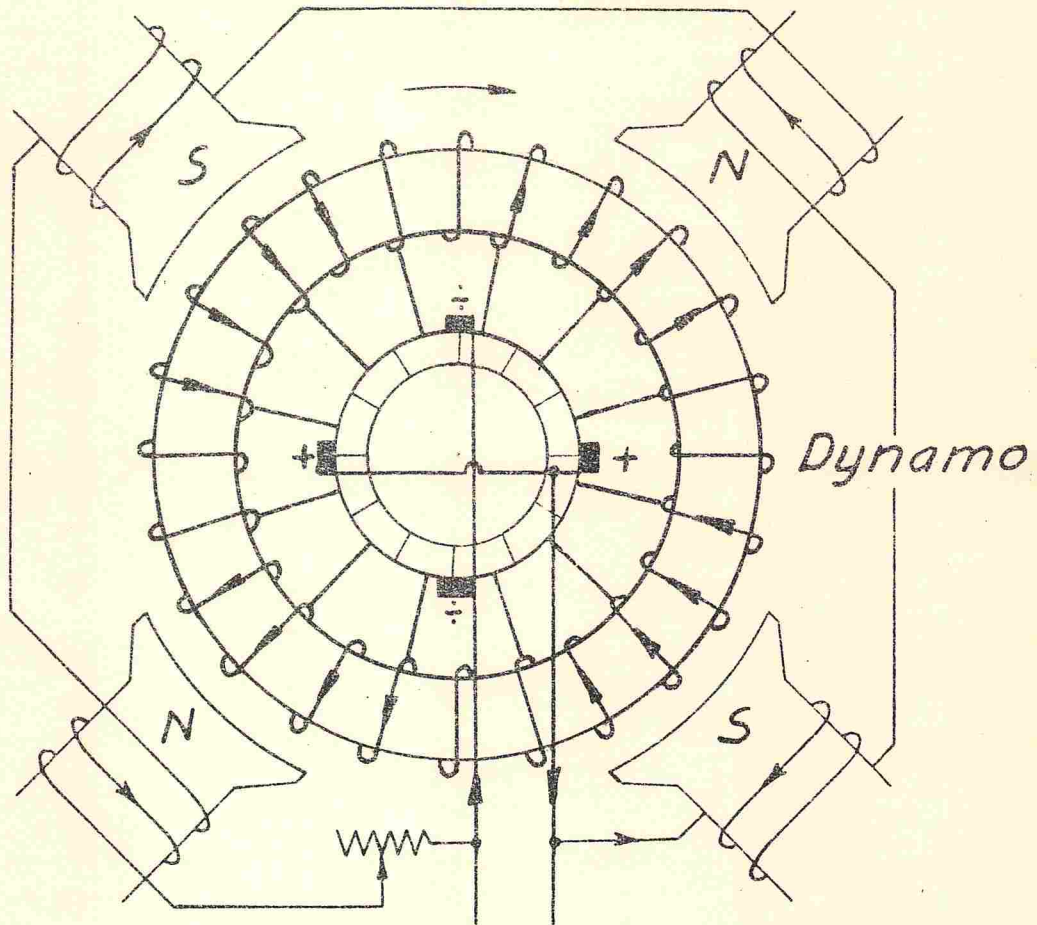


Fig 29.

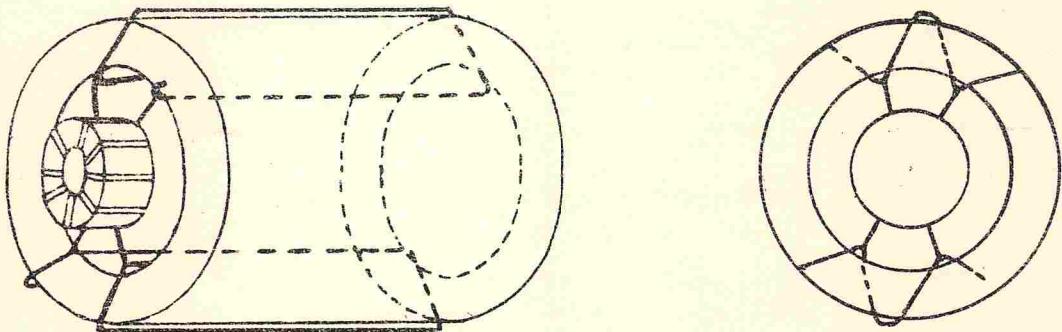


Fig 30.



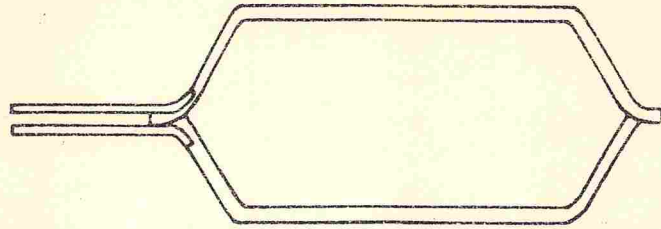


Fig 31.

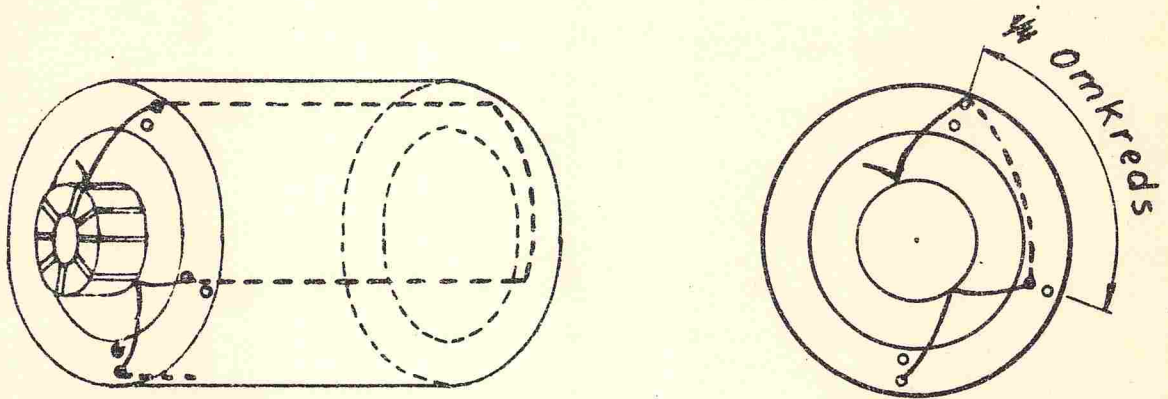


Fig 32.

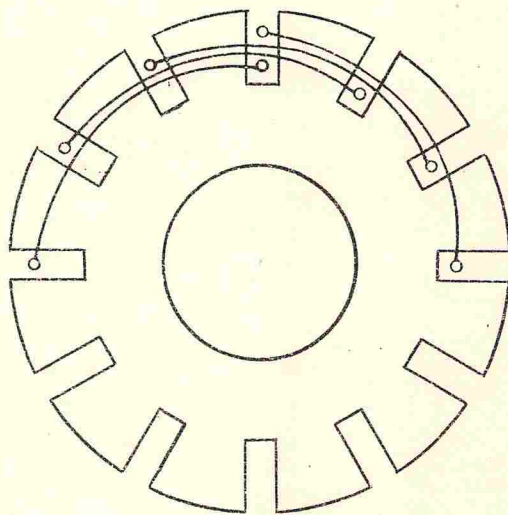


Fig 33

# "Pintsch"

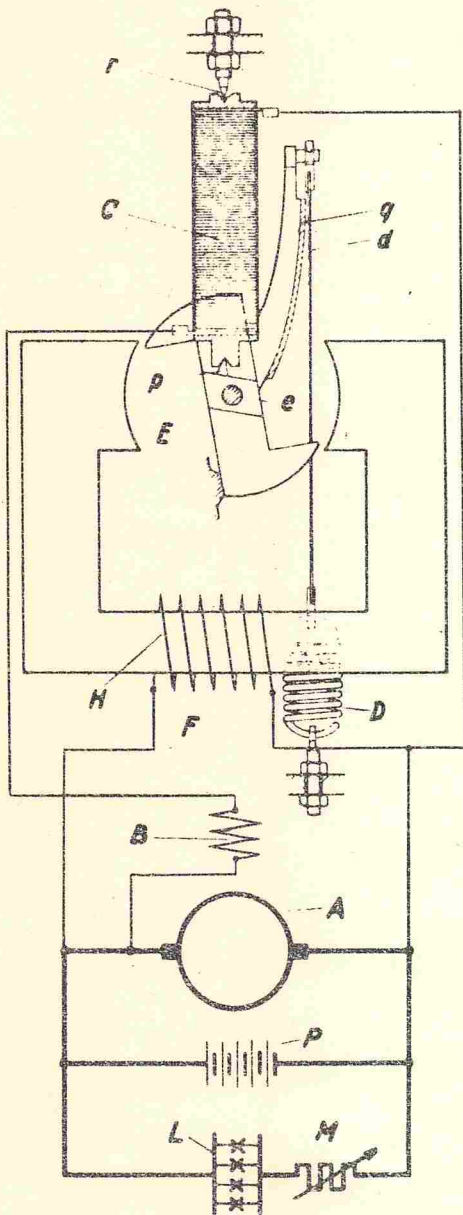


Fig 34.

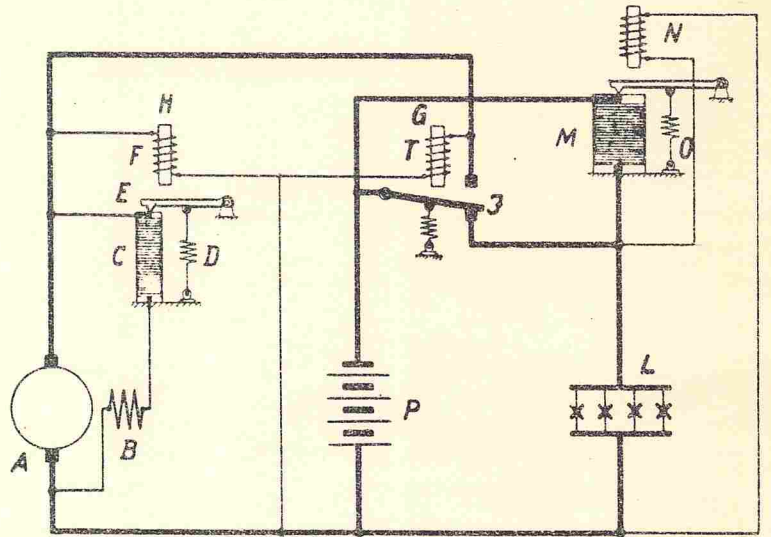


Fig 35.

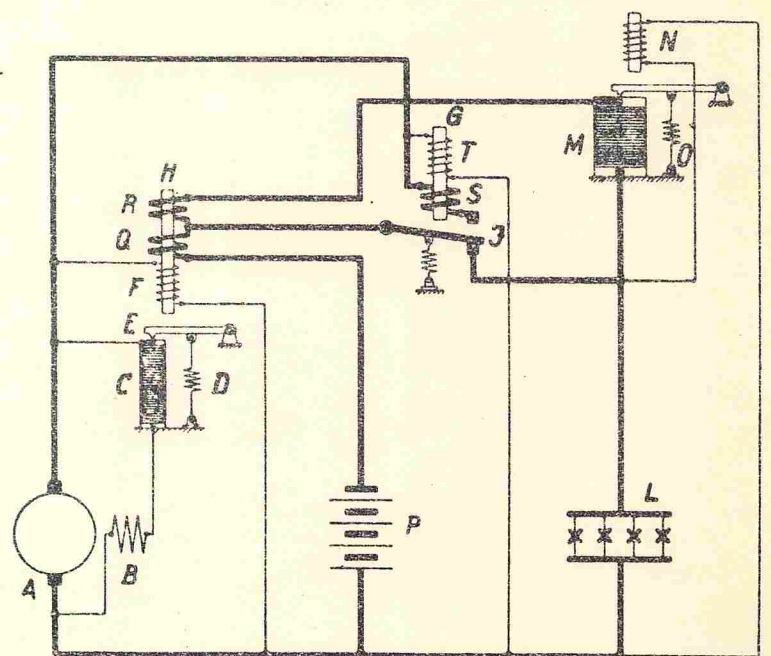


Fig 36.





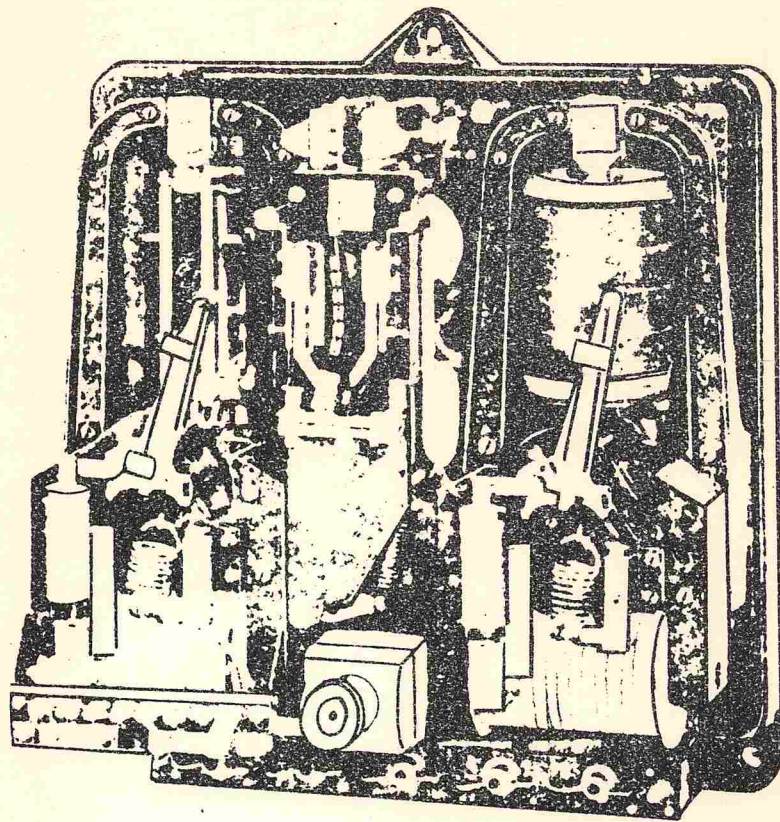


Fig 39.

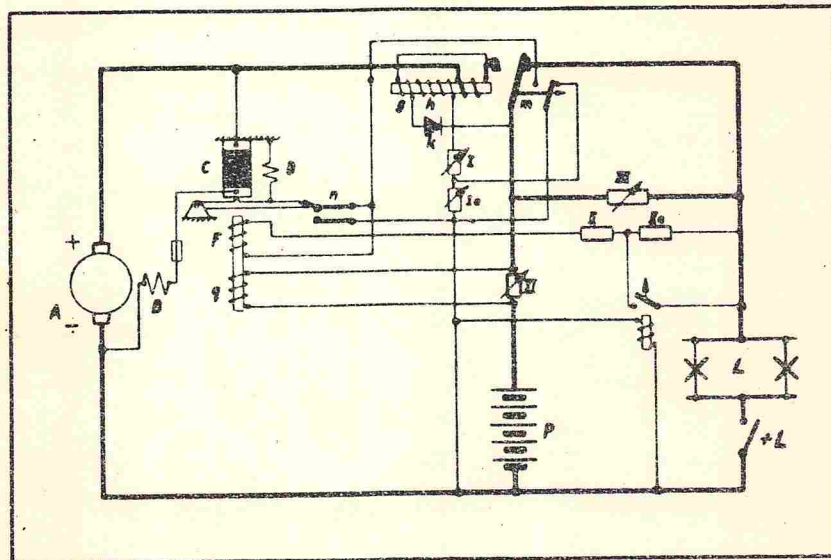


Fig 40.



GEZ ZR 50 s.

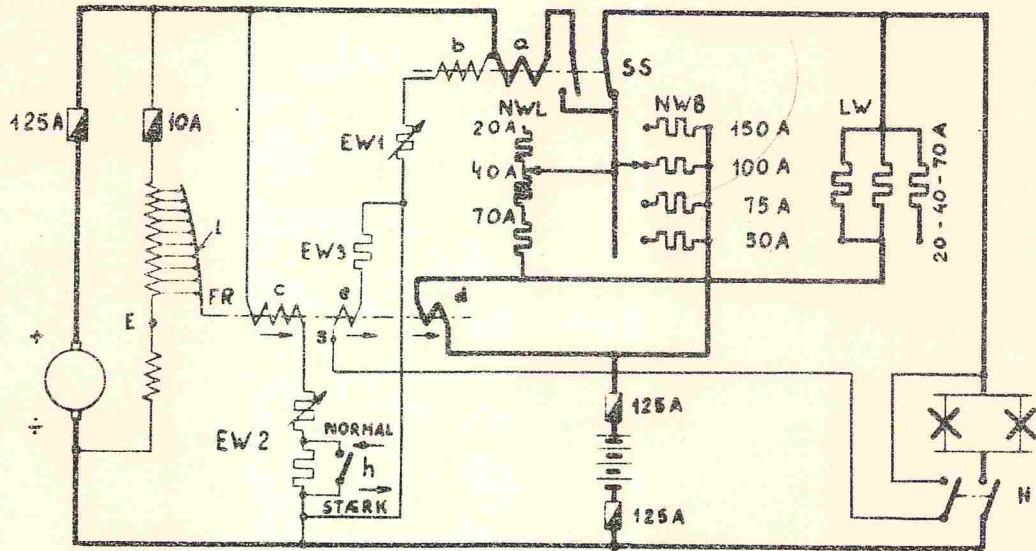


Fig 41.

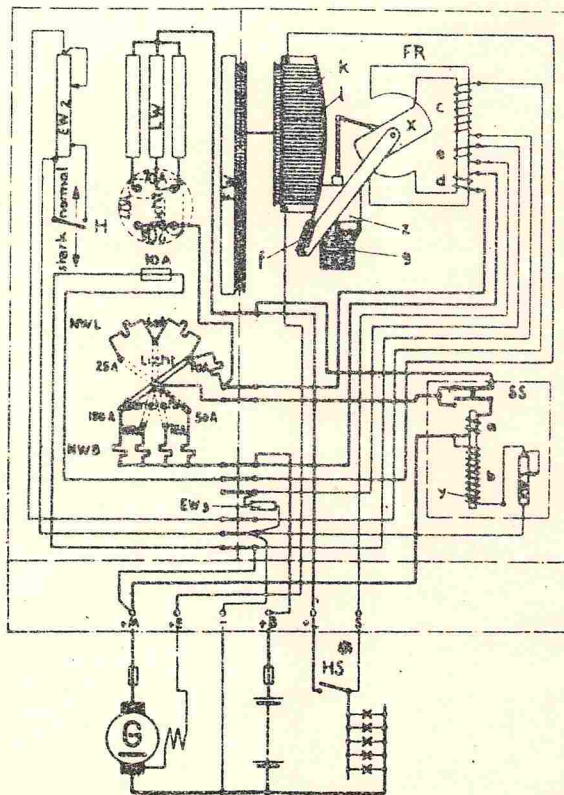


Fig 42.

STONE S 300 / T2.

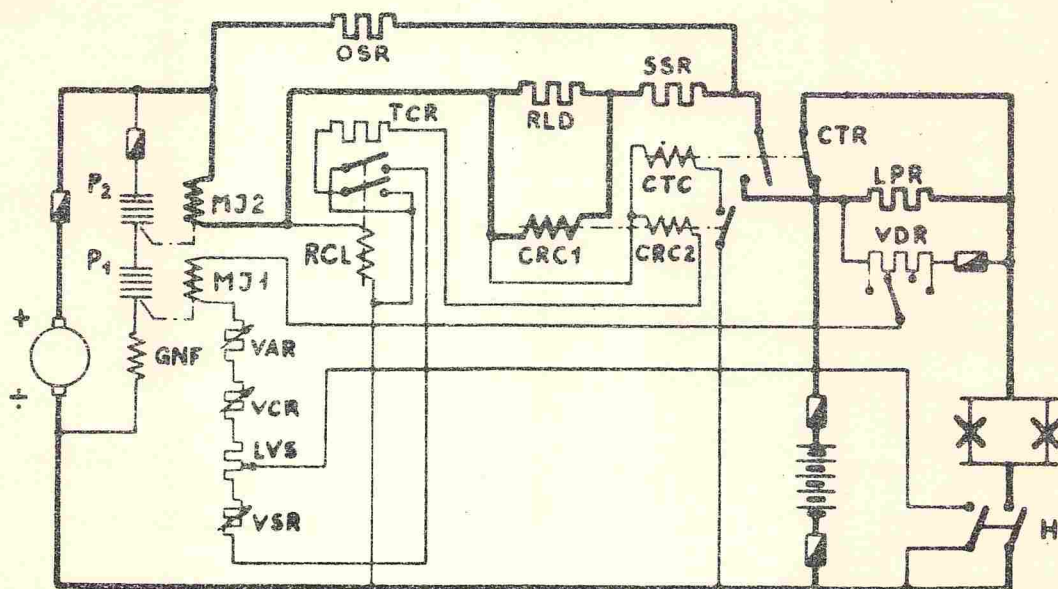


Fig 43.

STONE 150 / T 2 / v21.

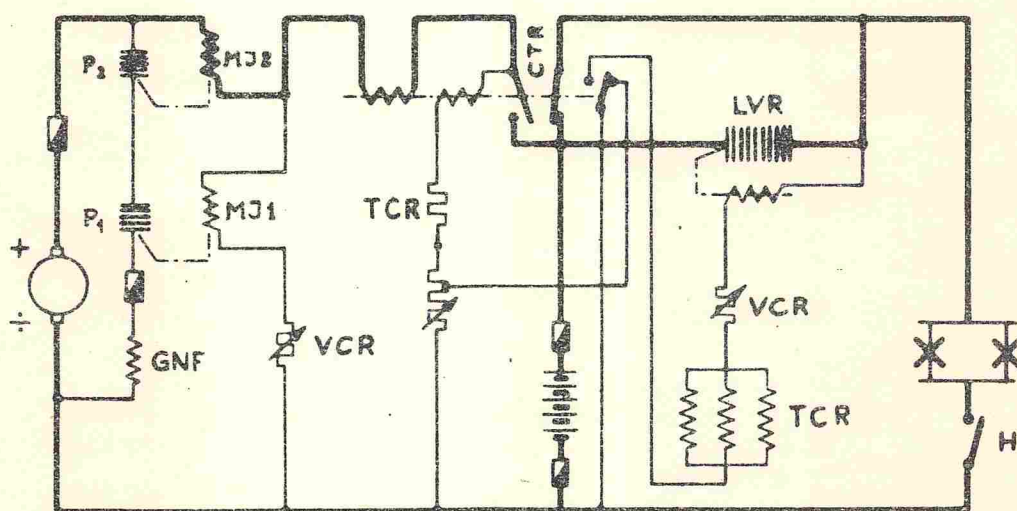


Fig 44.



STONE S 150/T2

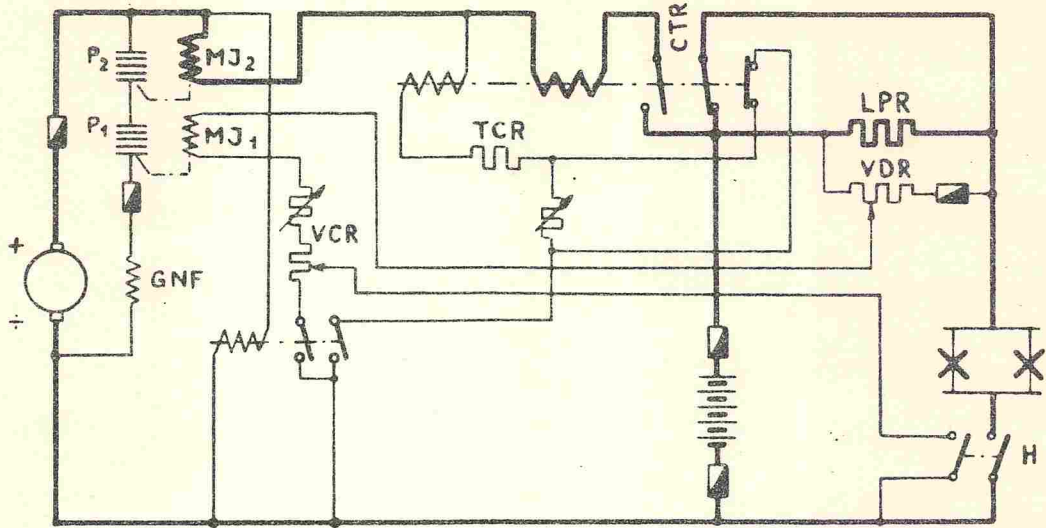


Fig 45.

„Rosenberg“

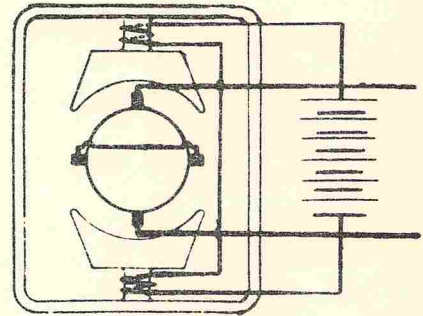


Fig 46.

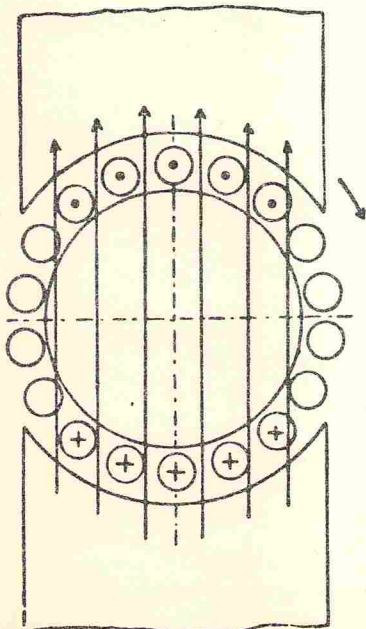


Fig 47.

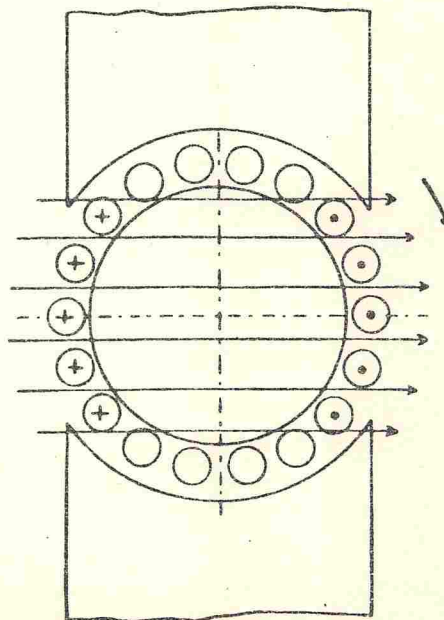


Fig 48.

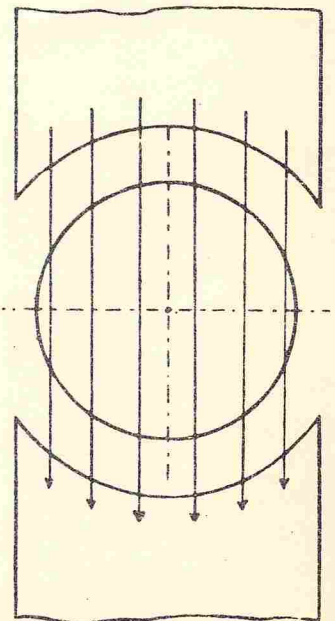


Fig 49.

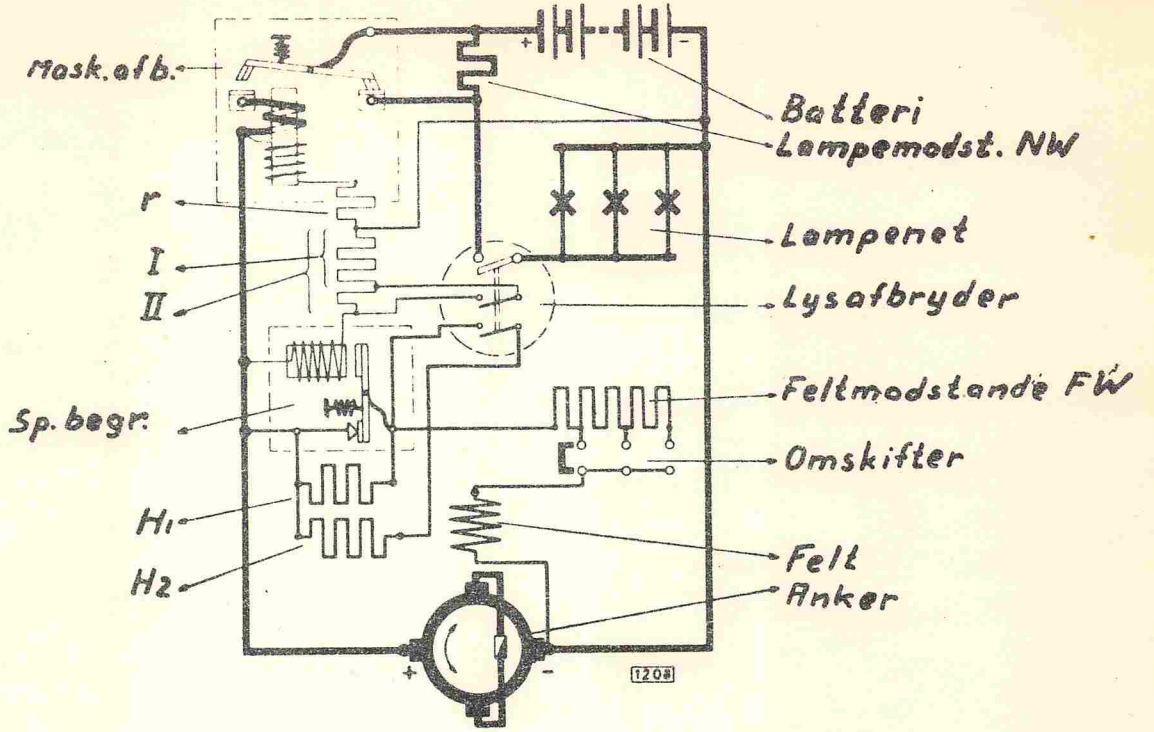


Fig 50.

Schaltbild der elektrischen Beleuchtungseinrichtung mit Apparateschrank QS

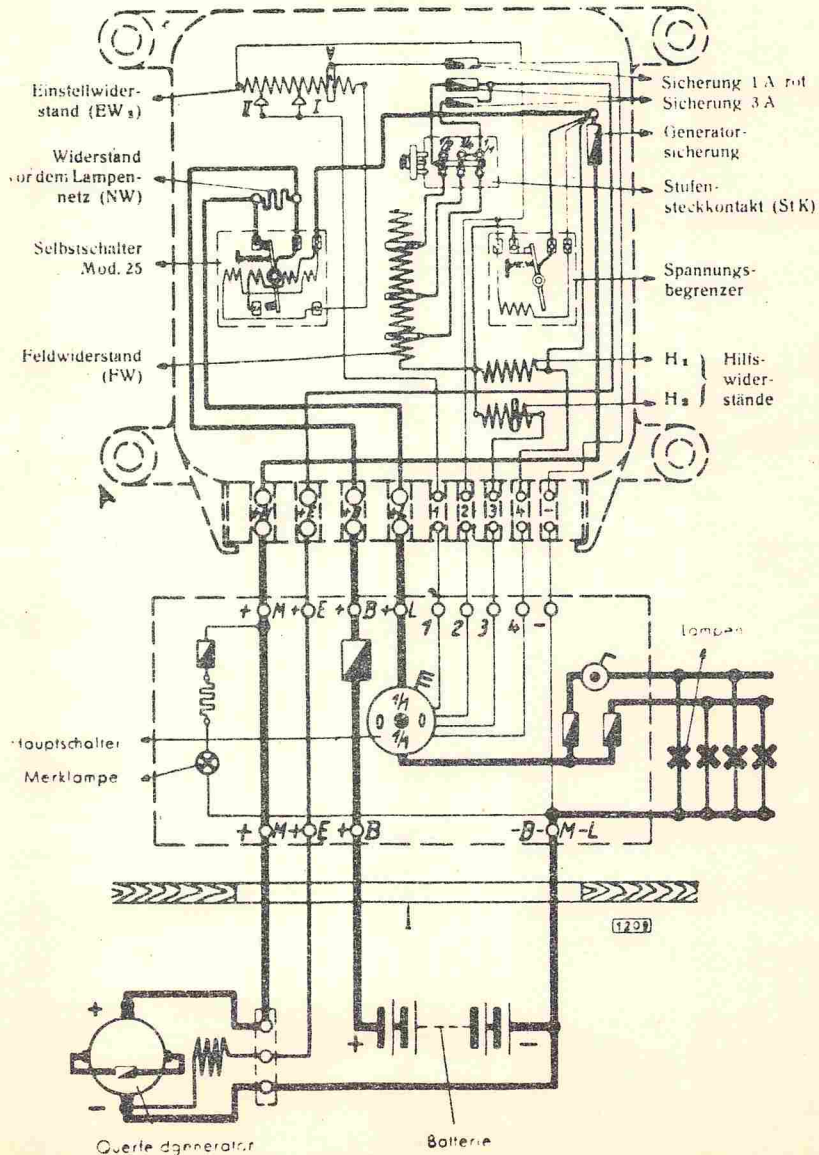


Fig 51.



mit Apparateschrank QSL und  
GEZ-Kohlelampenregler

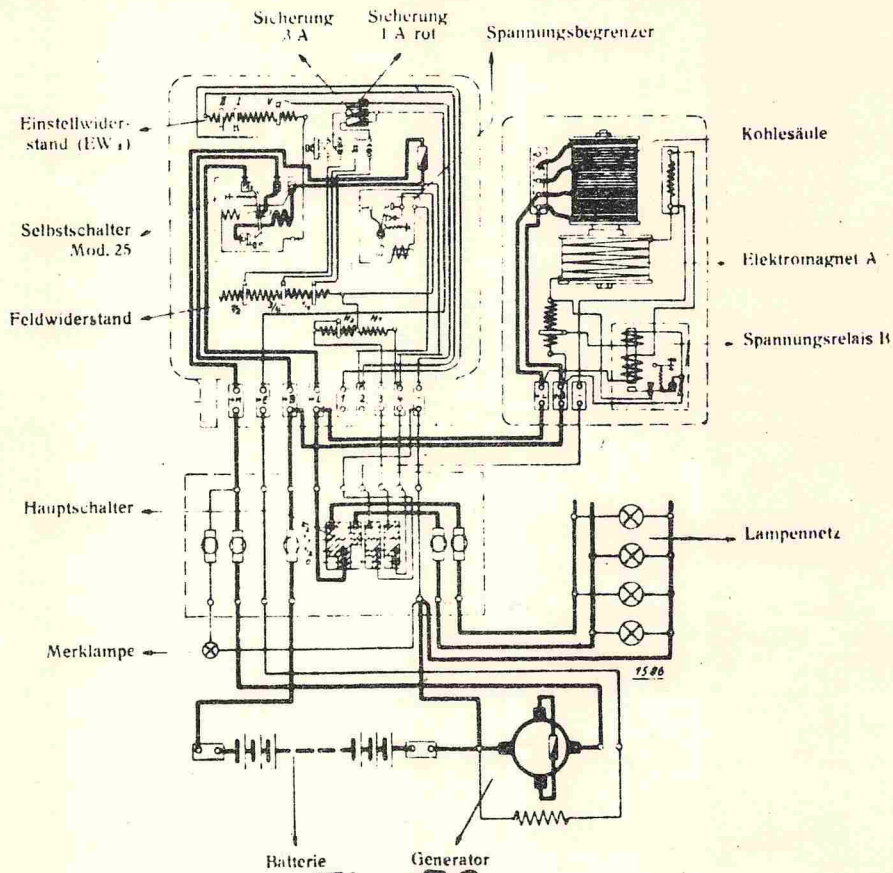


Fig 52.

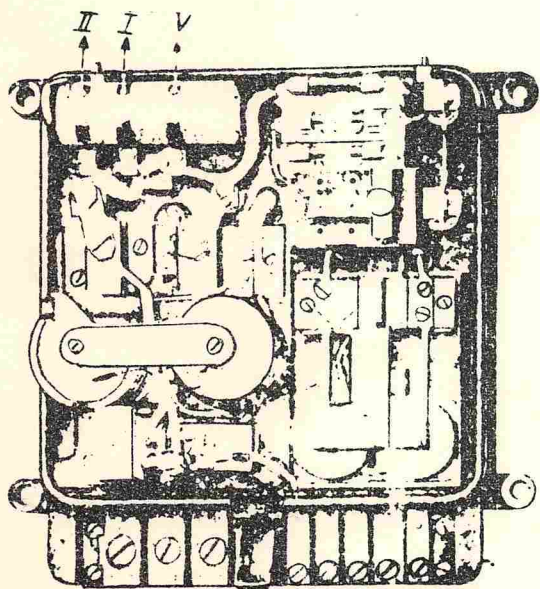


Fig 53.

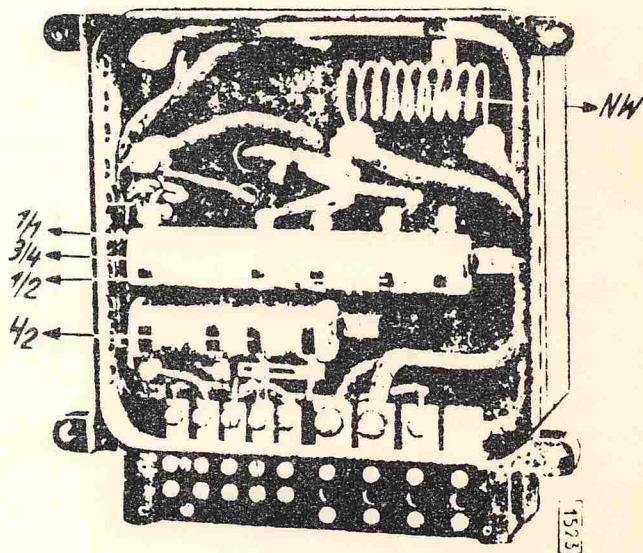


Fig 54.



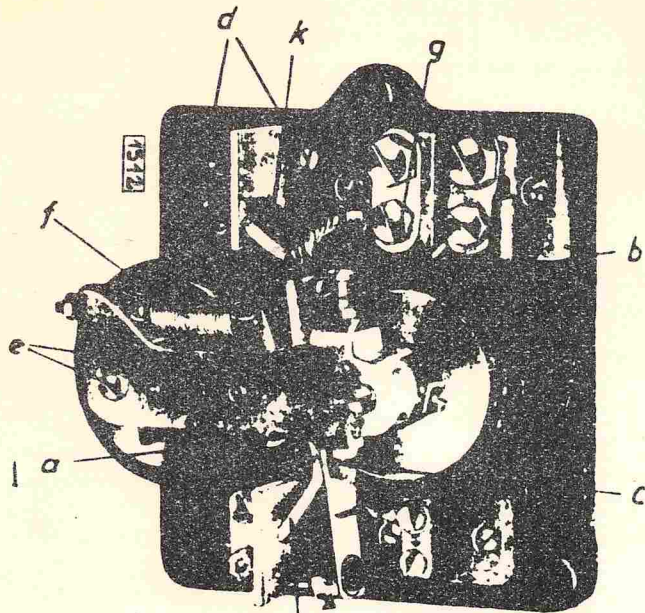


Fig 55.

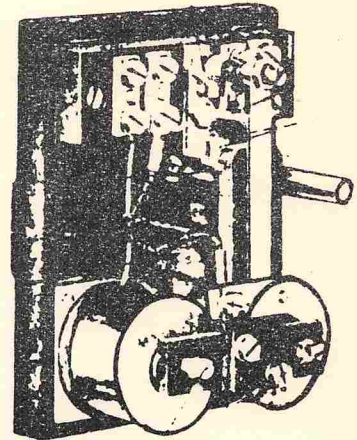


Fig 56.

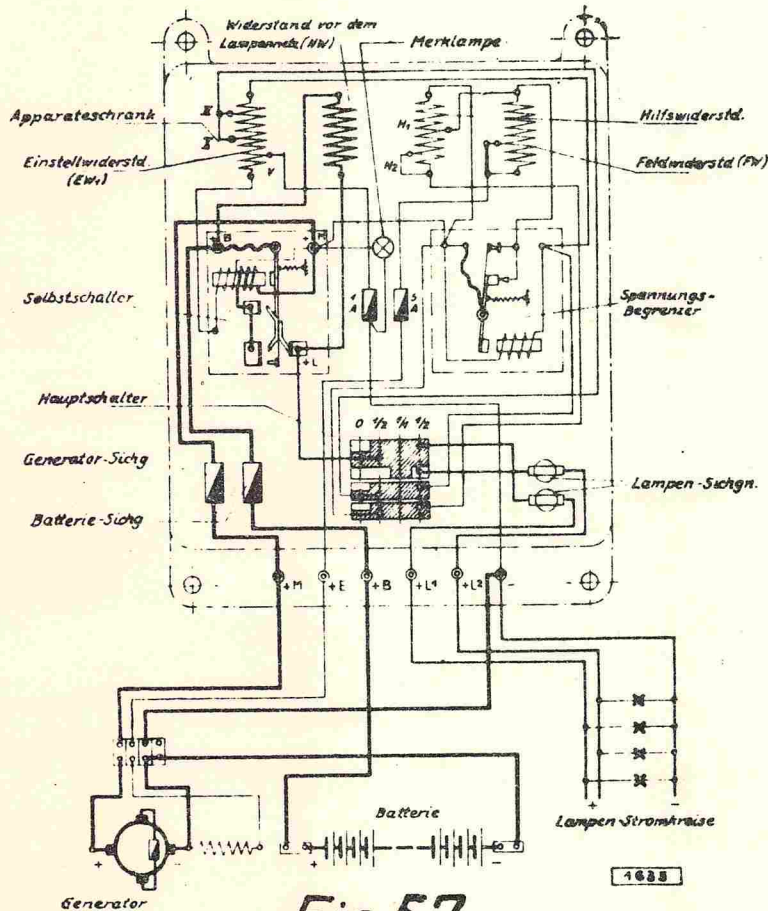


Fig 57.

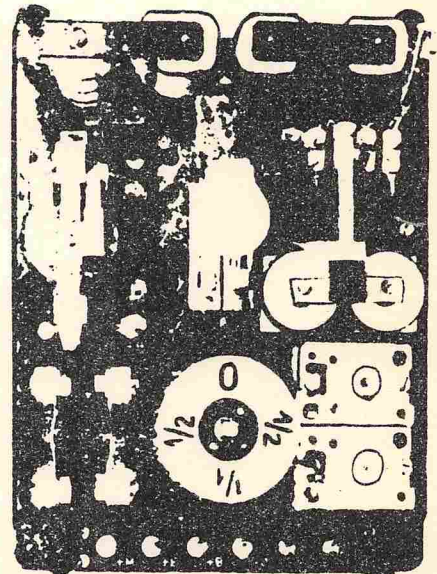


Fig 58.

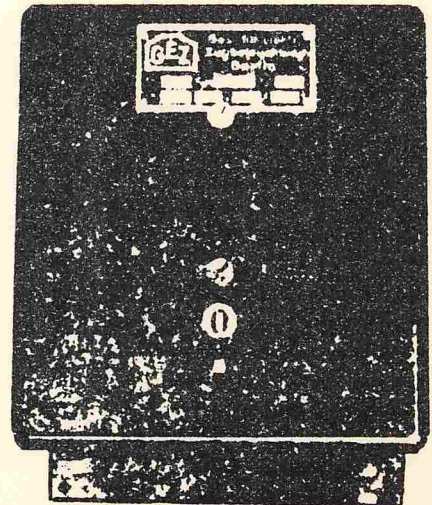


Fig 59.



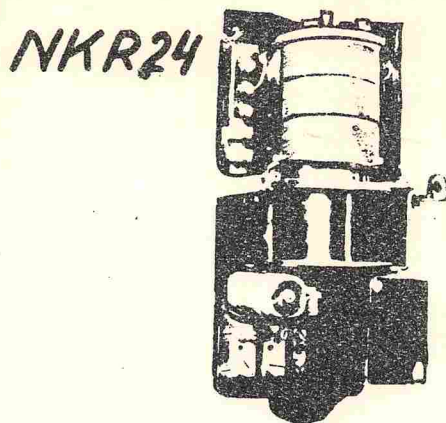


Fig 60.

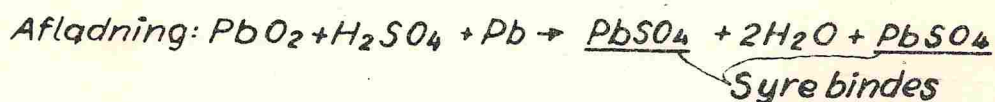
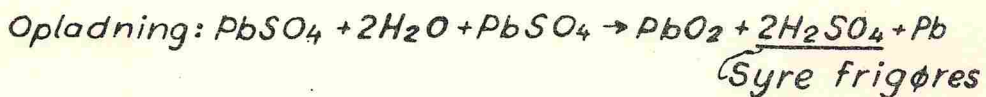
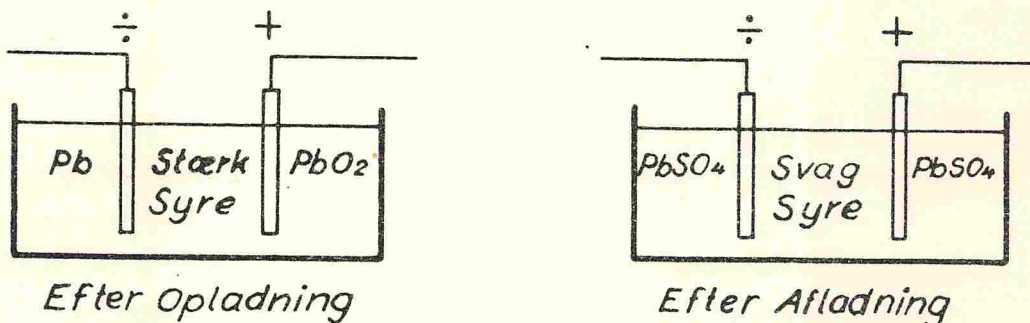


Fig. 61

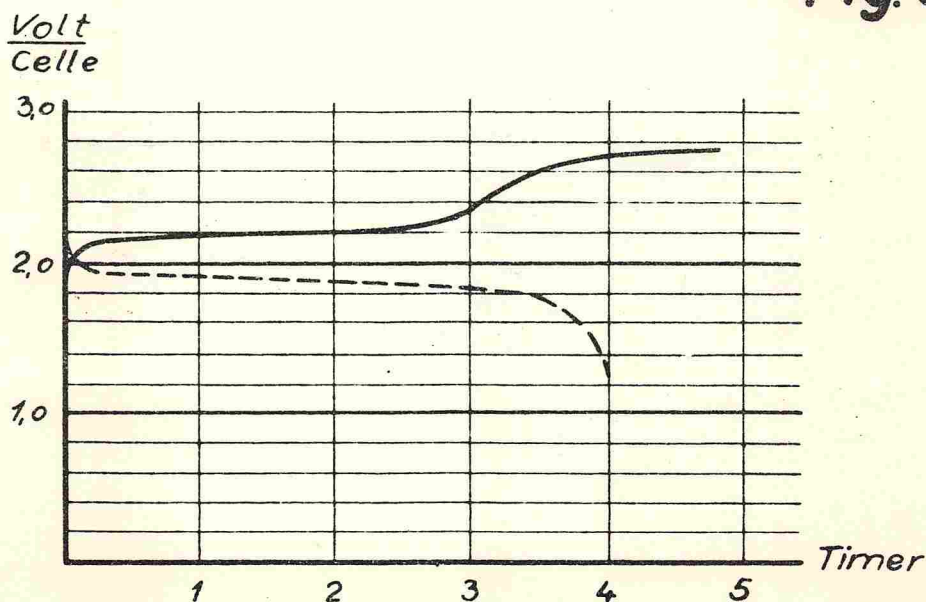


Fig. 62

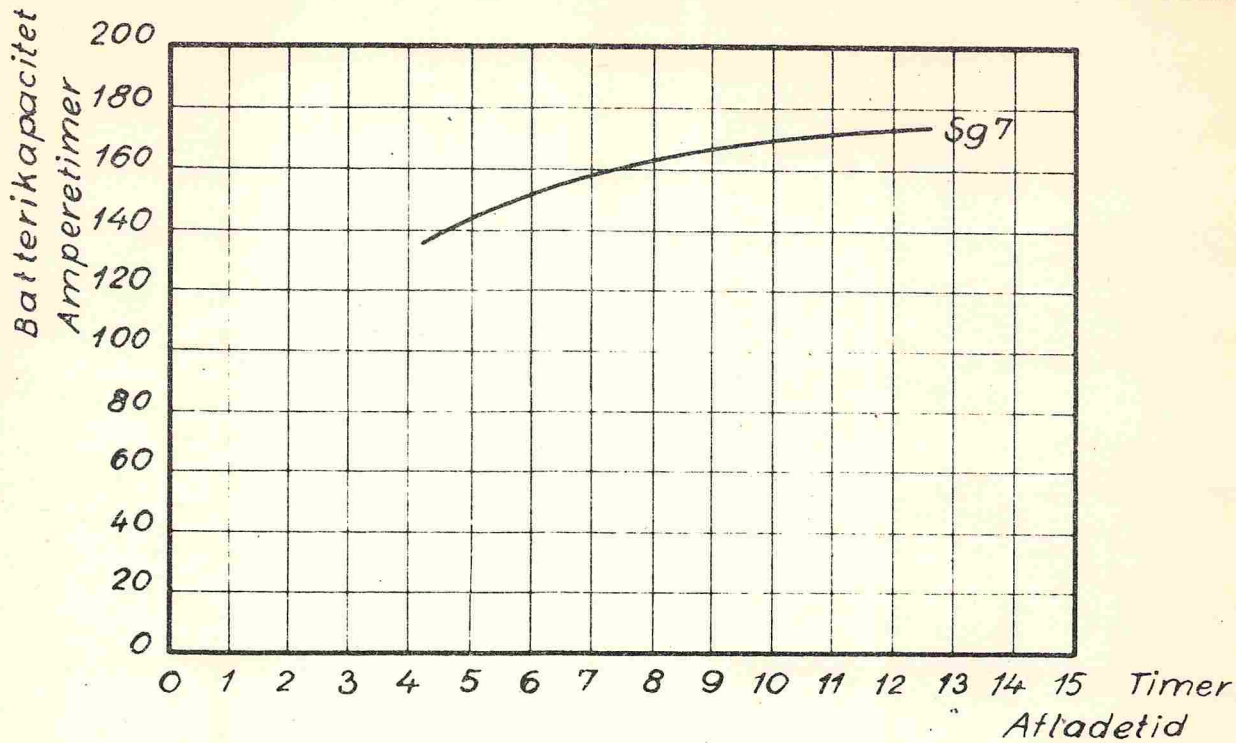


Fig. 63.

Sg7 og Dur 9

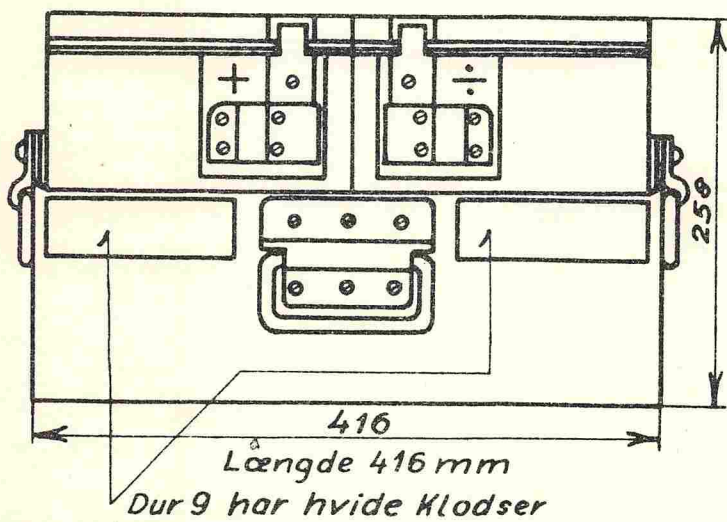


Fig. 64.

Dur 18

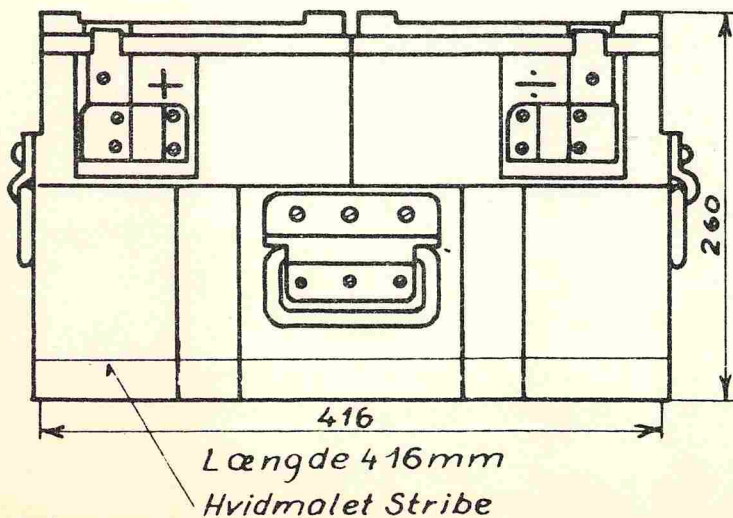


Fig. 65.



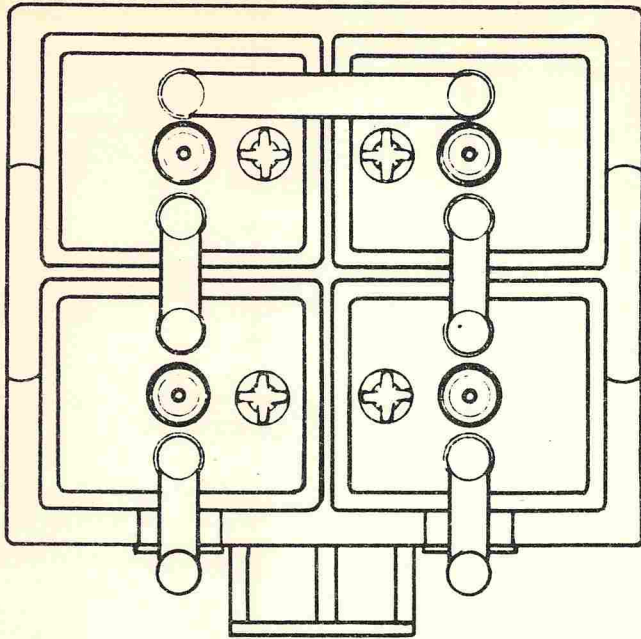


Fig. 66.

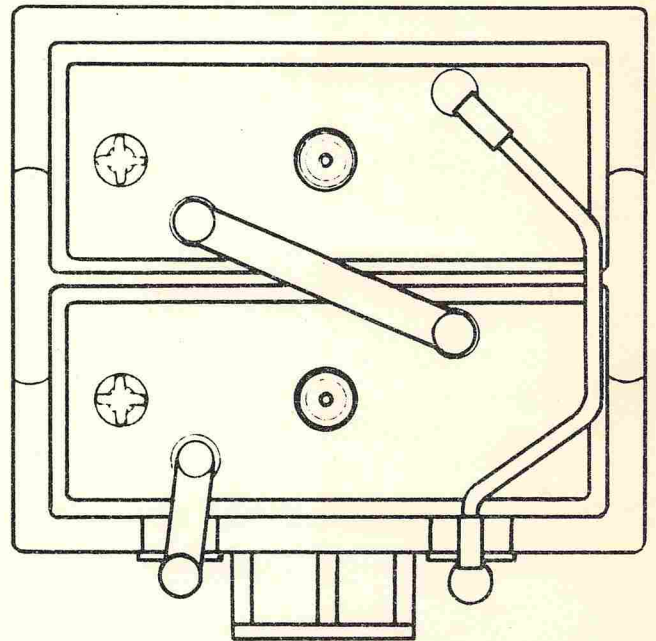


Fig. 67.

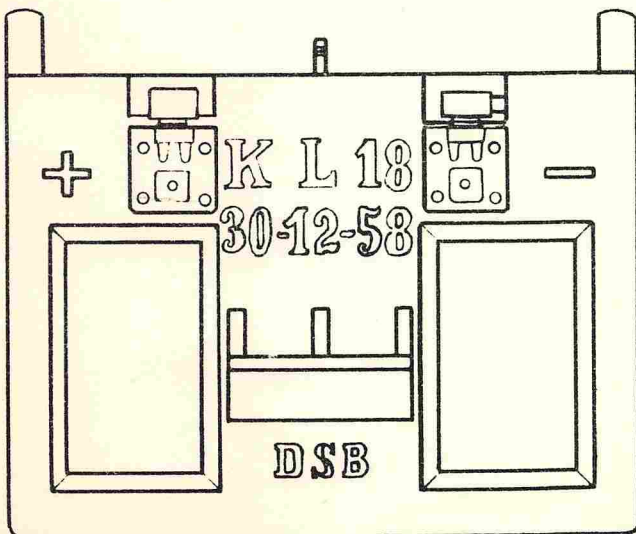


Fig. 68.

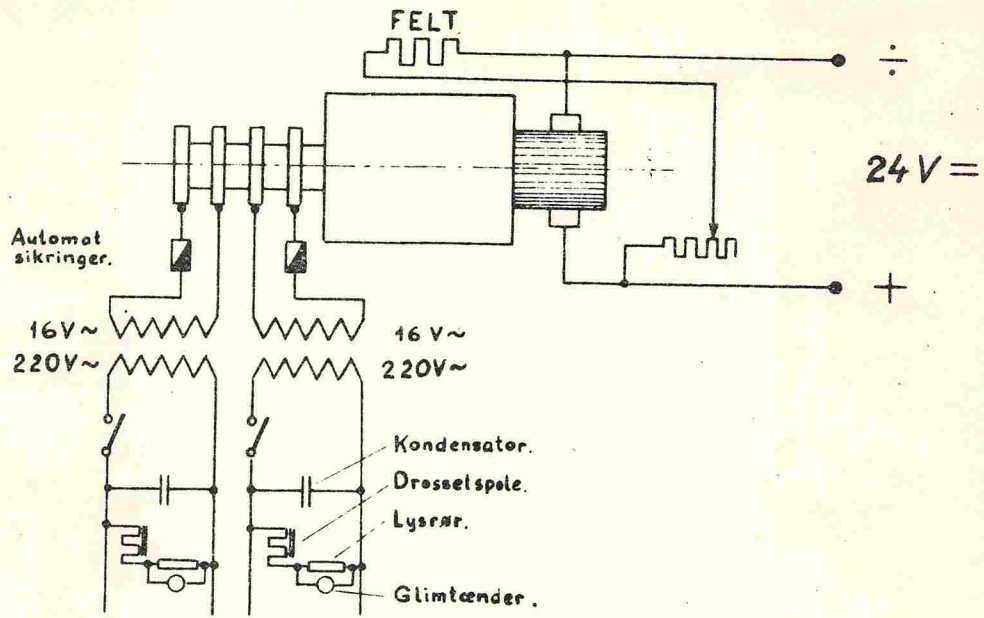


Fig. 69.

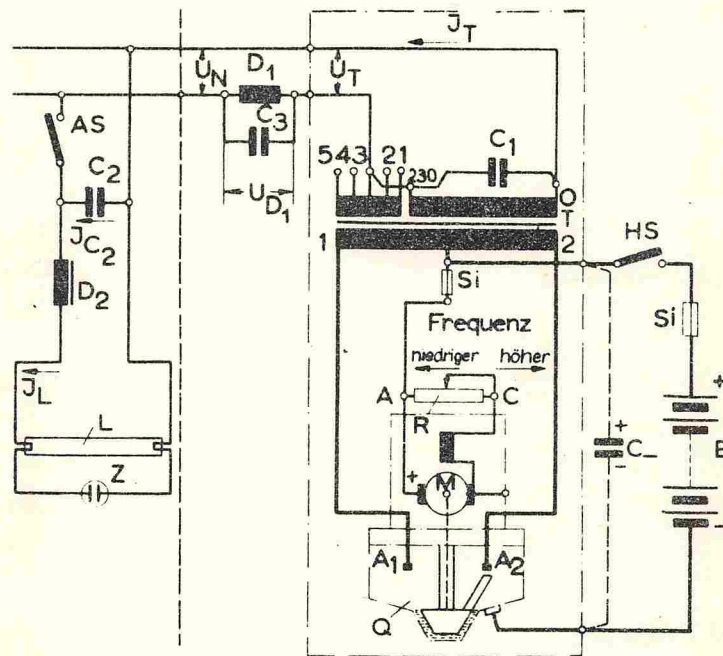


Fig. 70.

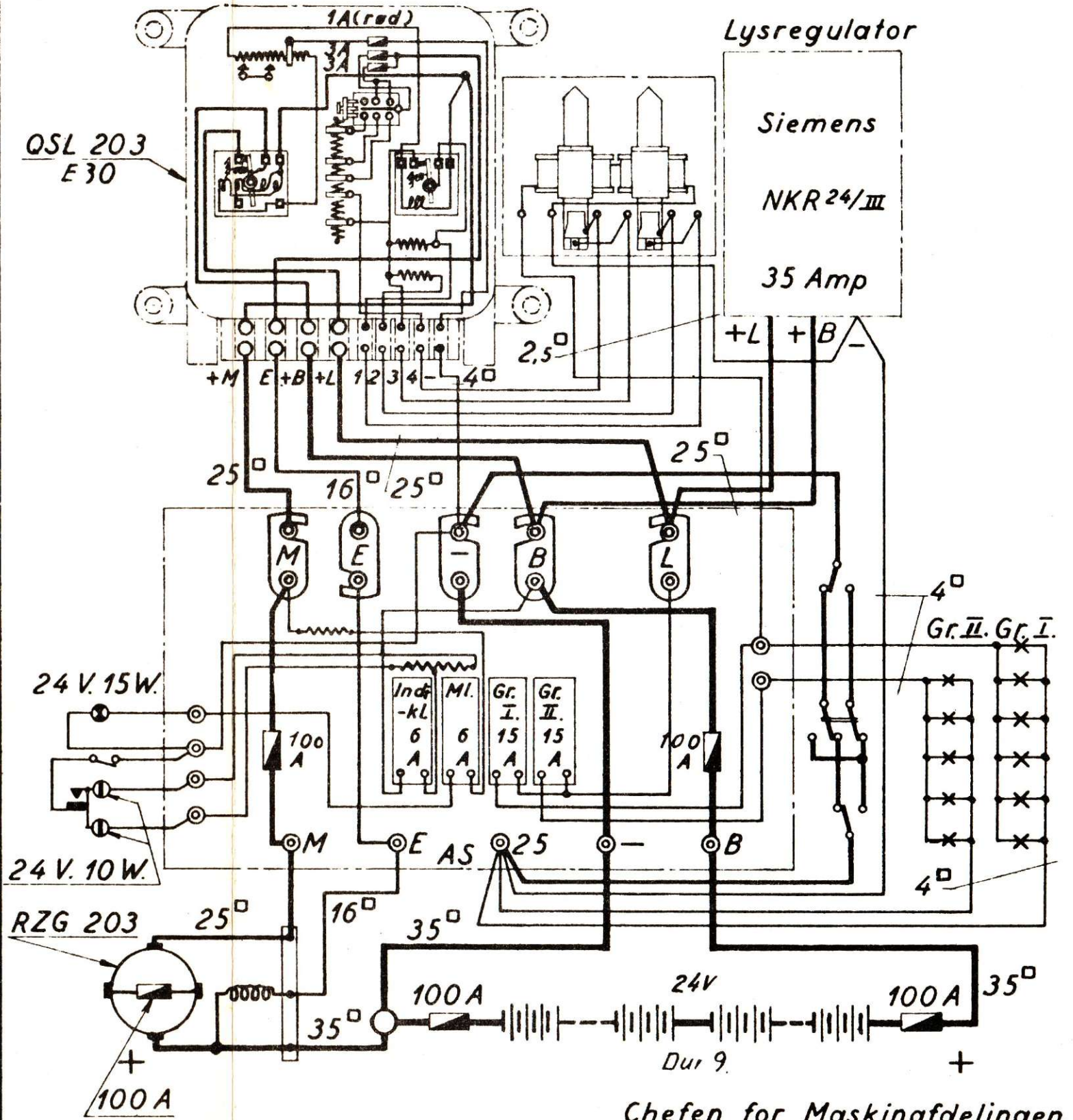






# Rosenberg Dynamoanlæg.

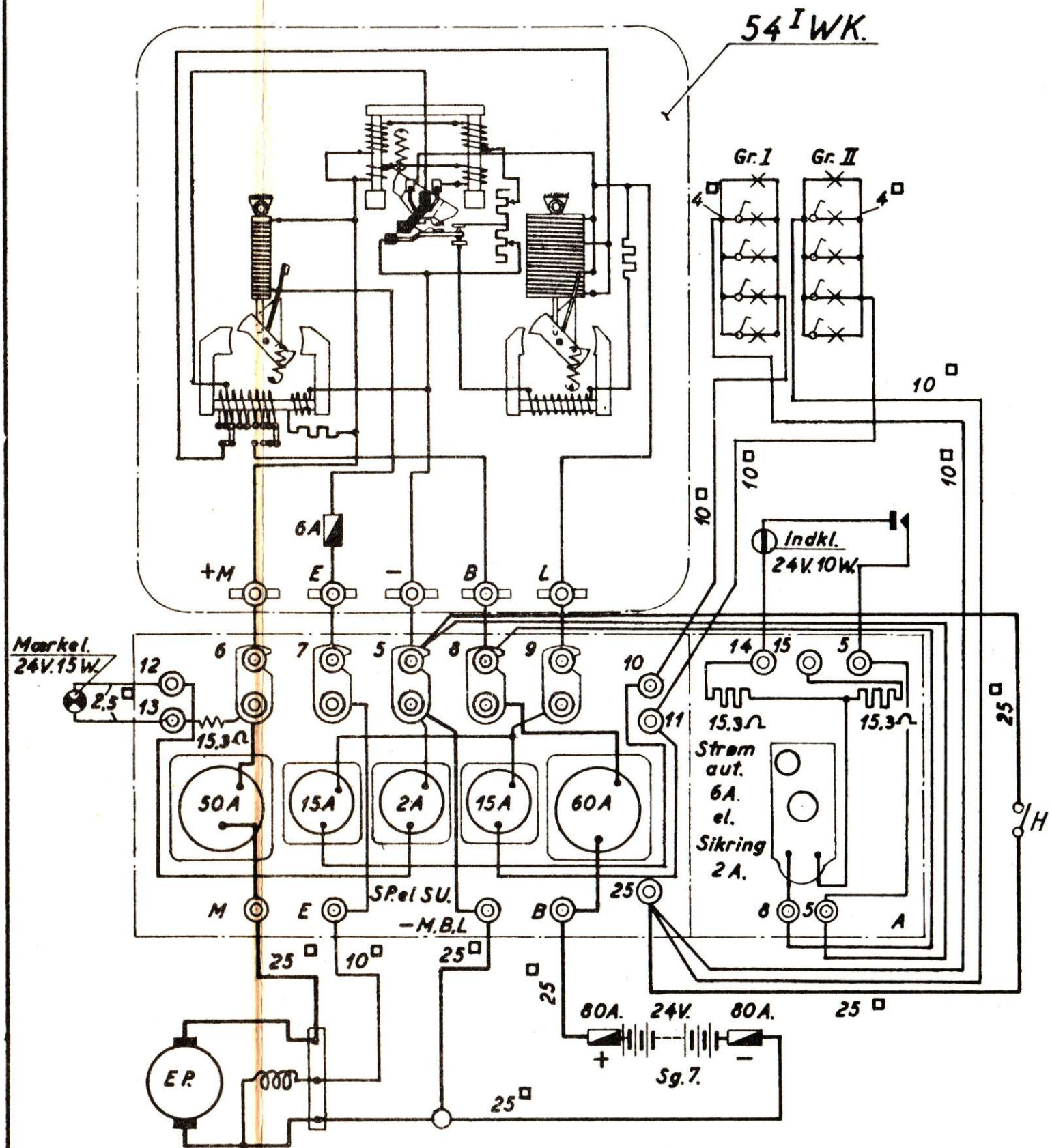
Vogn ltr. nr. \_\_\_\_\_





# Pintsch dynamo.

Vogn ltr. nr. \_\_\_\_\_



54<sup>I</sup>WK.

Gr. I

Gr. II

Mærkel.  
24V.15W

Indkl.  
24V.10W

Strøm  
aut.  
6A.  
el.  
Sikring  
2A.

E.P.

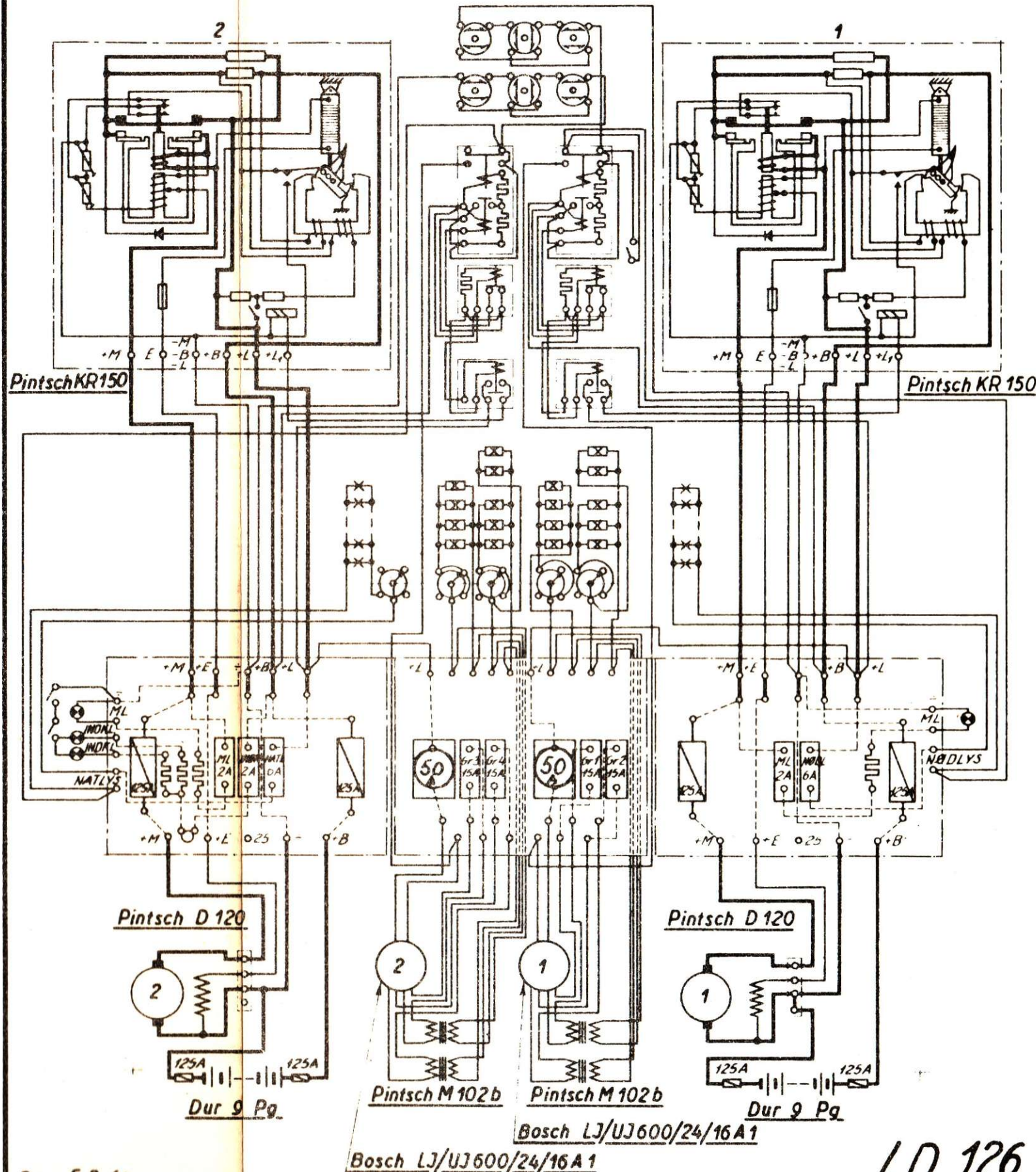
Chefen for Maskinafdelingen.

L.D. nr. 120.

.Rev.



Pintsch dynamo  
Vogn ltr. AL. nr.

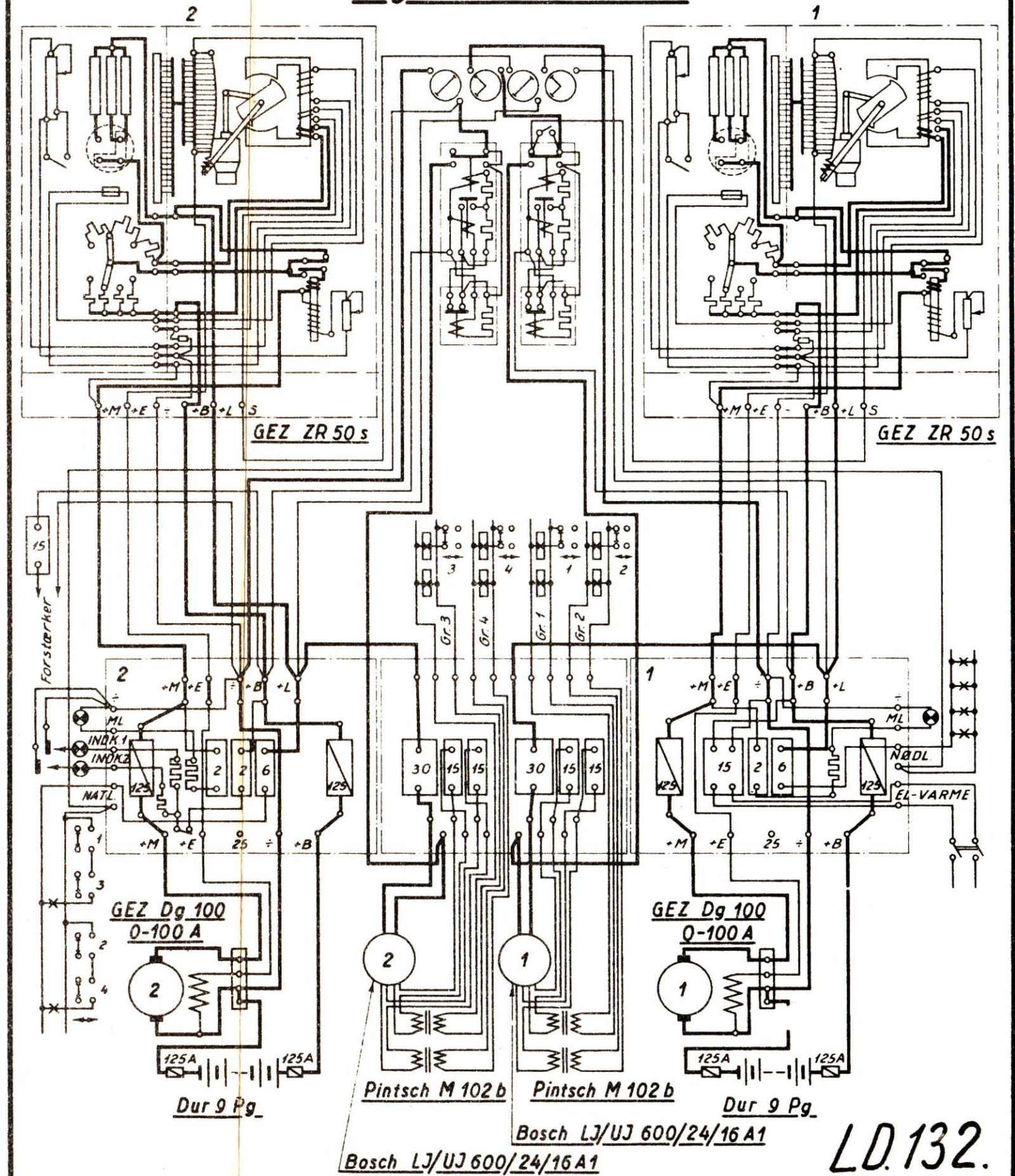


Rev. 5-2-60.

L.D. 126.



GEZ dynamo  
Vogn ltr. Cc. nr.

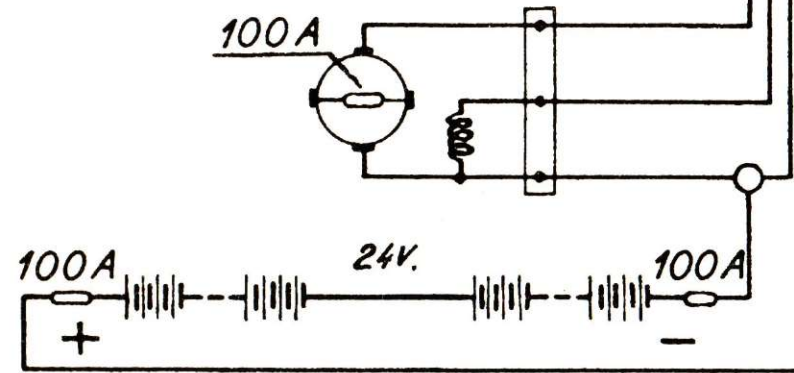
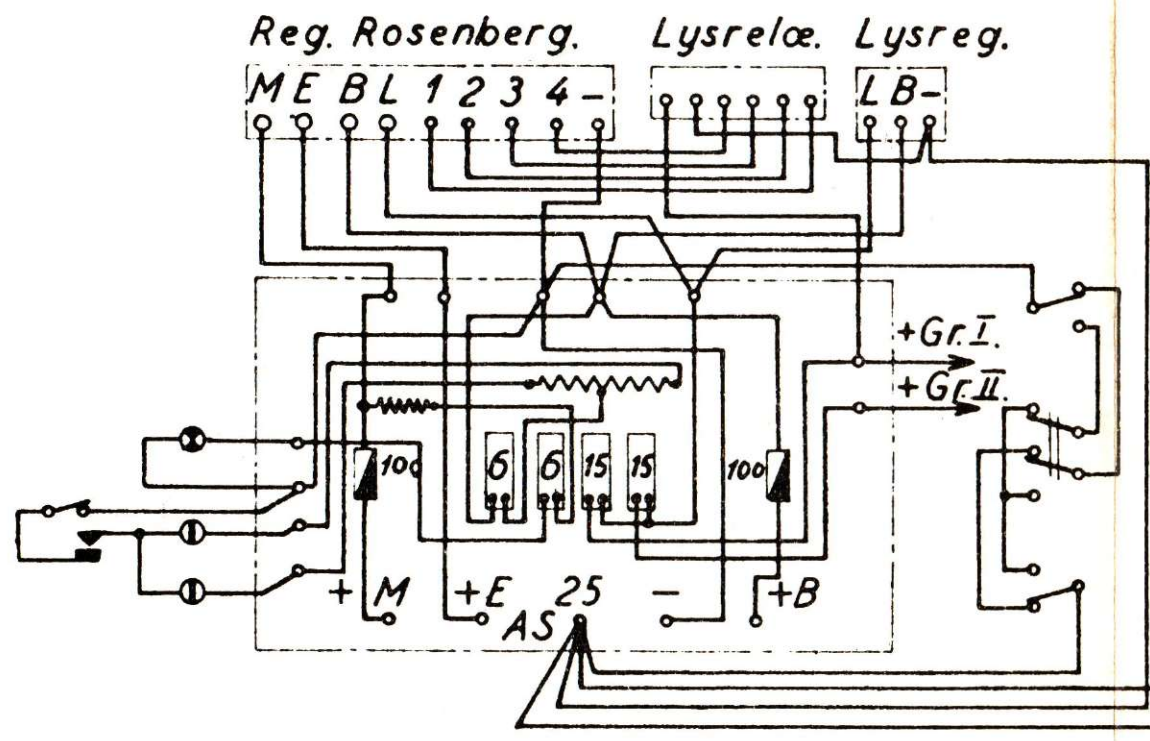
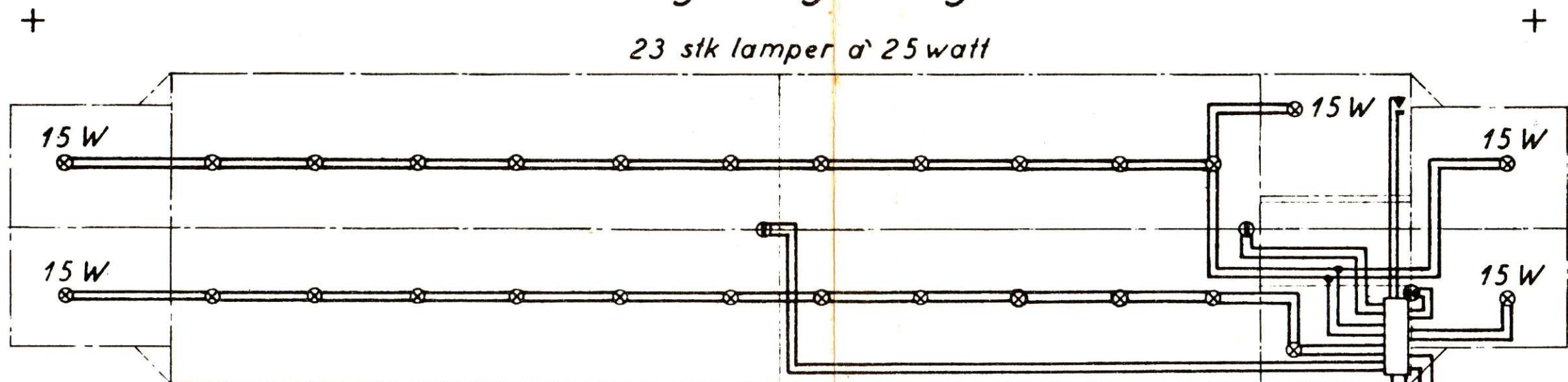


LD.132.



Strømskema for belysning i vogn ltr. nr. \_\_\_\_\_

23 stk lamper à 25 watt



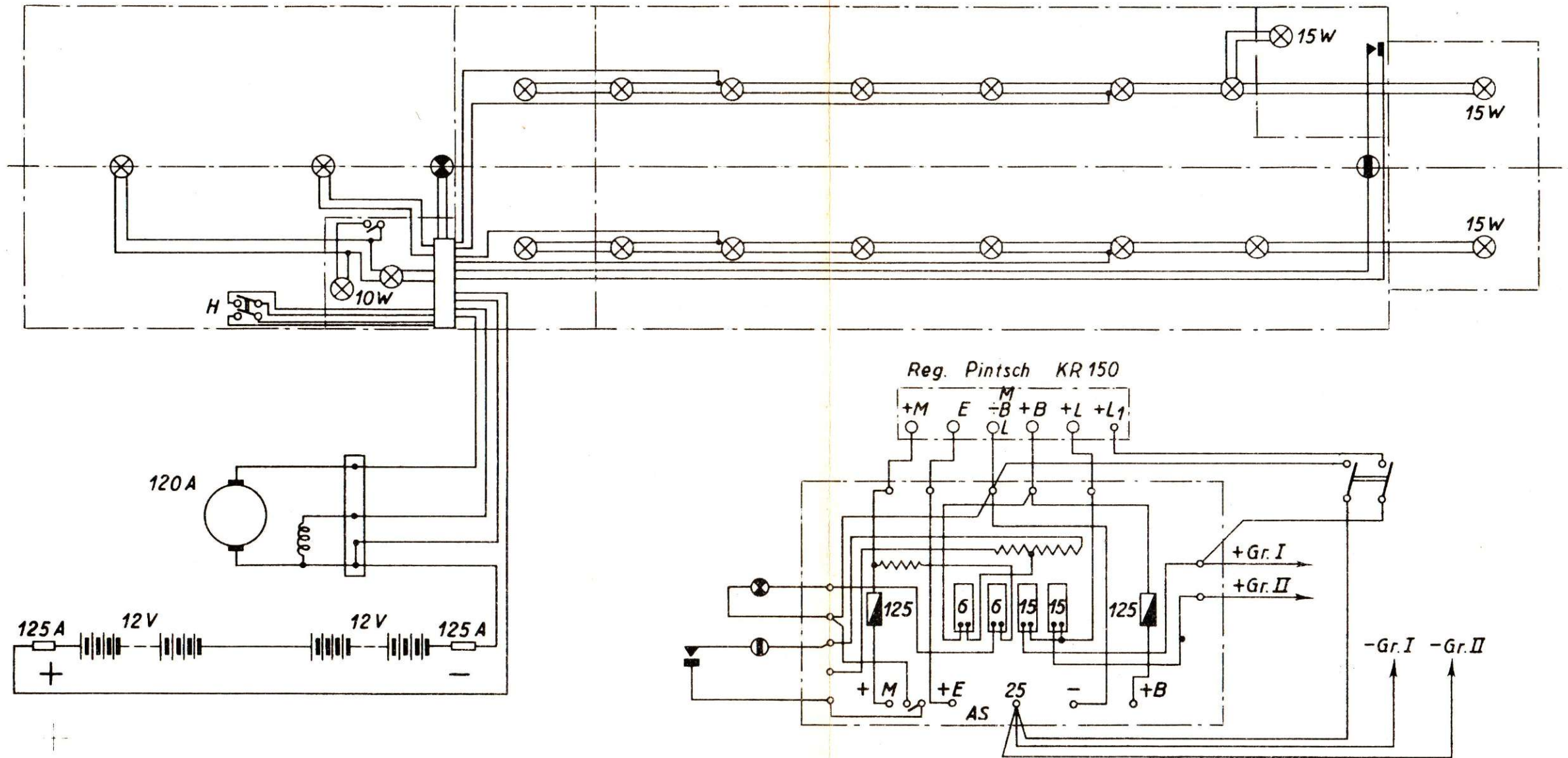
Remlængde (excl. lås): 7115 mm.-bredde: 105 mm - lås: 80 mm

Chefen for Maskinafdelingen.  
VD. nr. 247.



# Strømskema for belysning i vogn ltr. \_\_\_ nr. \_\_\_

17 stk. lamper á 25 watt

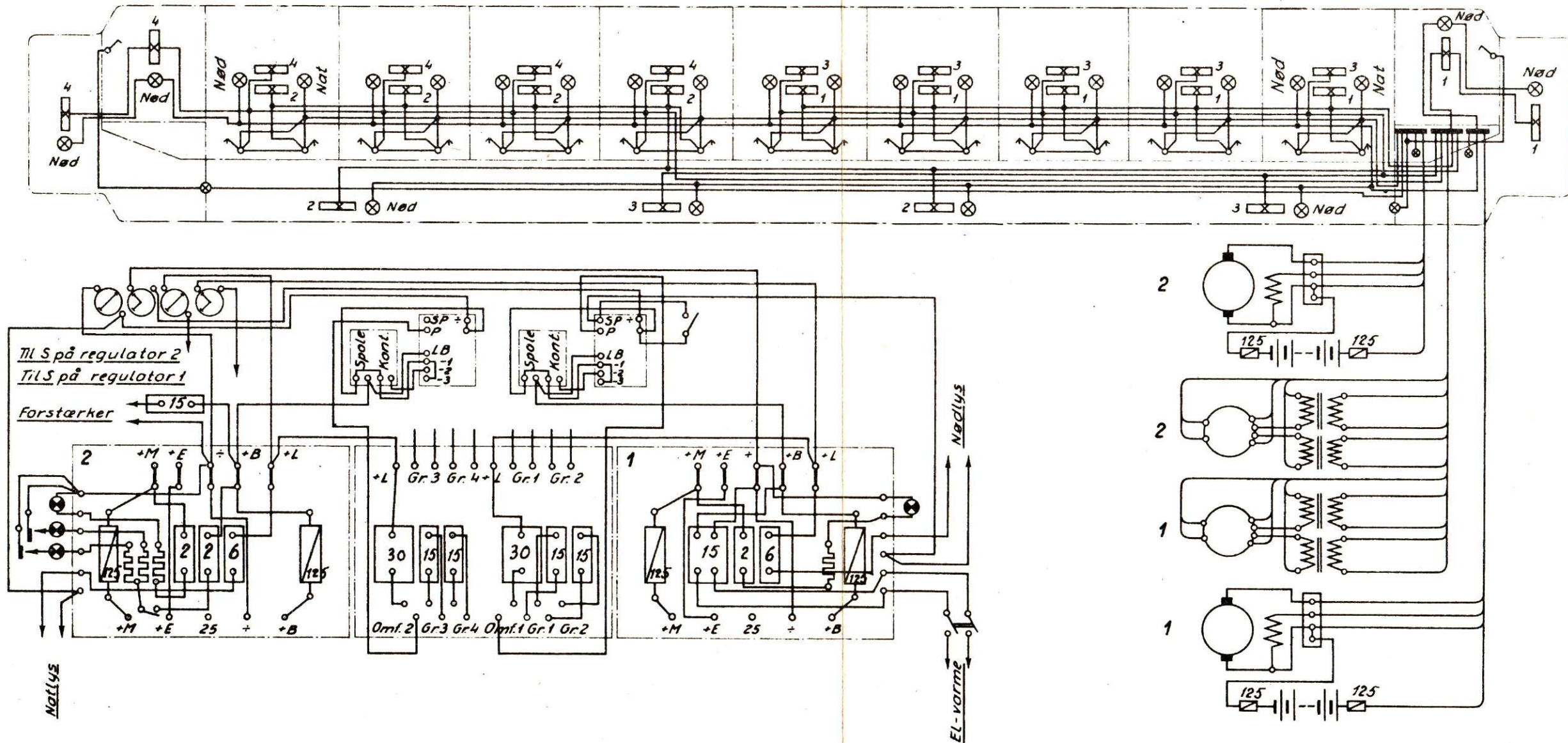


Remlængde (excl. lås): 2430 mm.

Chefen for maskinafdelingen  
VD. nr. 323.



Strømskema for belysning i vogn ltr. Cc. nr.



Remlængde (excl. lås) 2920 mm, bredde 105 mm

VD.327



## Oversigt over ledningsdiagrammer.

XXX

ID nr	Type	Dynamo	Tavle	Dynamoreg	Lambereg	
4	Rosenberg	RZG 103	Ingen	k.QS		
7	Pintsch	EP	2	54 <sup>I</sup> WK		
10	Pintsch	EP	2 + 30	54 <sup>I</sup> WK		
12	Rosenberg	REG 55	33	Tavle 33		
13	Pintsch	EP	2 + 31	54 <sup>I</sup> WK		
15	Pintsch	EP	2,4 el. SP	54 <sup>I</sup> WK el. P 8/8		
16	Dick	CF 12	13	FSR-L	Pintsch 54/13.08	Udgår
19	Rosenberg	REG 76	15	Tavle 15		
20	Rosenberg	REG 76	16	Tavle 16		
21	Dick	CF 12	17	FSR-L	Pintsch 54/13.08	Udgår
22	Dick	CF 12	18	FSR-L	Pintsch 54/13.08	Udgår
25	Dick	CF 12	21	FSR-L	Pintsch 54/13.08	Udgår
28	Rosenberg	RZG 103	Ingen	k.QS		
29	Rosenberg	REG 55	7	Tavle 23		
30	Pintsch	EP	SP + B	54 <sup>I</sup> WK		
31	Rosenberg	REG 55	25	Tavle 25	Pintsch 54/13.07	
34	Rosenberg	REG 55	9	Tavle 11	Pintsch 54 VIII	
35	Pintsch	EP	SU el.SP	54 <sup>I</sup> WK el. 54 <sup>I</sup> D 3/8		
43	Pintsch	EP	SU el.SP	54 <sup>I</sup> WK 54 <sup>I</sup> D 3/8		
47	Pintsch	EP	SP	54 <sup>I</sup> WK		
52	Rosenberg	RZG 203	SU + A	QSL 203	NKR 24/III 35 A	
53	Pintsch	EP	SU el.SP	54 <sup>I</sup> WK		
55	Dick	CF 12	SU + B	FSR-L	NKR 24/III 35 A Pintsch 54/13.08	Udgår

## Oversigt over ledningsdiagrammer.

XXX

LDnr	Type	Dynamo	Tavle	Dynamoreg	Lamvereg	
57	Rosenberg	REG 55	SU	Tavle 34	Pintsch 54 VIII	
58	Pintsch	EP	SU + B	54 <sup>I</sup> WK		
59	Rosenberg	RZG 103	SU	QS 103 E 15		
61	Rosenberg	RZG 103	Ingen	k. QS		
63	Pintsch	EP el. GW	SU	54 <sup>I</sup> WK el. 54 <sup>I</sup> D 3/8 B 8/8		
71	Rosenberg	REG 76	Speciel	Speciel tavle	Speciel kulsøjle	
72	Rosenberg	RZG 203	SU1+B1+D1	QSL 203 D 45	NKR 24/III 35A	
76	Rosenberg	RZG 203	SU1+B1	QSL 203 D 45	NKR 24/III 35A	
78	Stone	100 A	SU3+B2+D2	S 300/T2		
79	Stone	100 A	SU3+B2+D2	S 300/T2		
80	Rosenberg	RZG 203	SU4+BV	QSL 203 CA	NKR 24/III 35A	
81	Dick	CF 12	SU + A	KF 26 sr 1	Pintsch 54 VIII	Udgår
82	Pintsch	EP	SU	54 <sup>I</sup> WK		
83	Dick	CF 12	SU + B	KF 26 sr 1	Pintsch 54 VIII	Udgår
84	Pintsch	EP	SU el. SP + A	54 <sup>I</sup> WK		
85	Pintsch	EP	SU el. SP + A	54 <sup>I</sup> WK		
86	Rosenberg	REG 76	Speciel	Speciel- tavle		
87	Pintsch	Pintsch 110 el. 120 A	AS	Pintsch 50 WKD		
88	GEZ	GEZ 100 A	AS	ZR50S		
89	Rosenberg	RZG 203	AS	QSL 203		
90	Pintsch	Pintsch DPS 253	AS	Pintsch 50 WKD		
91	Rosenberg	RZG 203	SU + B	QSL 203 E 30		



## Oversigt over ledningsdiagrammer.

XXXI

LD nr	Type	Dynamo	Tavle	Dynamoreg	Lambereg	
93	Pintsch	EP	SU el.SP+A	54 <sup>I</sup> WK		
94	Rosenberg	REG 76	SU + B	NV 11.239-1 Special tavle		
95	Rosenberg	REG 55	SU el.SP+A	Tavle 27		
96	Pintsch	EP	SU el.SP+A	54 <sup>I</sup> WK		
97	Rosenberg	RZG 203	AS	QSL 203 D 30	NKR 24/III 35 A	
98	Rosenberg	REG 55	SU el.SP+A	Tavle 23		
99	Rosenberg	RZG 203	SU	QSL 203 E 15	Pintsch 250/175/01	
101	Rosenberg	RZG 203	SU	QSL 203 E 15	Pintsch 250/175-01	
102	Rosenberg	REG 55	AS	Tavle 27	Pintsch 54 VIII	
104	Pintsch	EP	AS	54 <sup>I</sup> WK		
105	Pintsch	EP	AS	54 <sup>I</sup> WK		
106	GEZ	DG 253	AS	ZR 50 S		
107	Dick	CF 12	AS	FSR-L	NKR 24/III 35 A el. 54/13.08	Udgår
108	GEZ	DG 253	3 Tavler	ZR 50 S		2 Anlæg
109	GEZ	DG 253	3 Tavler	ZR 50 S		2 Anlæg
110	Pintsch	EP	AS	54 <sup>I</sup> WK		
111	GEZ	DG 253	3 Tavler	ZR 50 S		2 Anlæg
112	Pintsch	110 A el. 120 A	AS	Pintsch KR 150		
113	Rosenberg	REG 55	SU + A	Tavle 34		
114	Pintsch	EP	AS	54 <sup>I</sup> WK		
115	Dick	CF 12	SU + A	KF 26 srl		Udgår
116	GEZ	100 Amp	SU + specialt.	ZR 50 S		
117	Pintsch	EP	AS	EP		
118	Rosenberg	REG 76	Special tavle	Special tavle		
119	Rosenberg	REG 76	Special tavle	Special tavle		

## Oversigt over ledningsdiagrammer.

XXXII

LD nr	Type	Dynamo	Tavle	Dynamoreg	Lambereg	
120	Pintsch	EP	SU el. SP	54 <sup>I</sup> WK		
121	Pintsch	Pintsch 110-120 A	3 Tavler	Pintsch KR 150		2 Anlæg
122	Rosenberg	RZG 203	SU + speciel t	QSL 203 E 15	Pintsch 250/175/01	
123	Rosenberg	REG 55 el RZG 203	SU + speciel	QSL 55 E 15 QSL 55 D 15 QSL 203 E15	250/175/01 54 VIII	
124	GEZ	100 Amp	SU + B	ZR 50 S		
125	Dick	CF 12	AS	FSR-L	NKR 24/III 35A	Udgår
126	Pintsch	120 Amp	3 Tavler	KR 150		2 Anlæg
127	Pintsch	110-120 A	AS	KR 150		
128	Pintsch	120 A	AS	KR 150		
129	Pintsch	120 A	AS	KR 150		
130	Thrige-GEZ	CF 12	SU	ZR 50 S		
131	GEZ	DG 100	3 Tavler	ZR 50 S		2 Anlæg
132	GEZ	DG 100	3 Tavler	ZR 50 S		2 Anlæg
133	GEZ	100 Amp	SU + speciel t.	ZR 50 S		
134	Pintsch	EP	SU	34 <sup>I</sup> WK		
135	Pintsch	120 Amp	AS	KR 150		
136	Pintsch	120 Amp	SU + B	KR 150		
137	Pintsch	120 Amp	Tavle 18	KR 150		
138	Pintsch	120 Amp	AS	KR 150		
139	Pintsch	120 Amp	AS	KR 150		
140	GEZ	100 Amp	AS	ZR 50 S		
141	GEZ	100 Amp	AS + speciel t.	ZR 50 S		
143	GEZ	100 A	AS			
143	GEZ.	100 A	AS + specielt	ZR 50 S		
144	Pintsch	120 A	AS + NV 11.214	KR 150		
145	Stone	150 A	AS + specielt	S 150/T?/ V 21		
146	Pintsch	120 A	AS + NV 11.214	KR 150		



## Oversigt over ledningsdiagrammer.

XXXIII

LD nr	Type	Dynamo	Tavle	Dynamoreg	Lambereg	
147	GEZ	100 A	AS	ZR 50 S		
148	Pintsch	120 A	AS	KR 150		

OVERSICHT OVER TOGBELYSNINGSDYNAMOER.

<u>Dynamo type</u>	<u>spænding</u>	<u>strøm</u>	<u>omdrejninger</u>	<u>remskive- diameter</u>	<u>vægt</u>	<u>kuldiam.</u>	<u>kulkvalit.</u>	<u>kulleverand.</u>
REG 76	67/87	40	400 - 1600	175 mm	270 kg	65 x 9 x 50	E 1657 y	Schunk & Ebe
REG 55	24/32	45	400 - 2400	140 mm	230 kg	65 x 13 x 50	E 1657 y	- do -
REG 26	24/32	25	200 - 2000	140 mm	120 kg	40 x 16 x 50 38 x 9,5 x 50	E 1657 y	- do -
RZG 103	24/32	45	350 - 2400	110 mm	110 kg	30 x 8 x 40	E 2027	- do -
RZG 203	24/32	70	350 - 2400	140 mm	165 kg	40 x 10 x 40	E 2027	- do -
Pintsch/Titan EP	24/30	45	340 - 2500	130 mm	114 kg	35 x 9 x 35	EL 1400	- do -
Thrige CF 12	24/33	45	400 - 2500	140 mm		20x12,5 x 25	EL 1400	- do -
Stone XR 29 s	30	100	400 - 2500	kardan	222 kg	1" x 3/8" x 1 3/4"	EG 14	Morgan
GEZ/Siemens 100	24/30	100	350 - 2400	160 mm	145 kg	45 x 9 x 40	EG 70	Le Carbone
Pintsch Dps 110	24/30	110	425 - 2200	200 mm	192 kg	45 x 9 x 40	EG OA/T	- do -
Pintsch/Titan 120	30	120	400 - 2200	200 mm	160 kg	8 x 35 x 32	EL 1400	Schunk & Ebe
Stone XR 30 LC	27/30	150	630 - 3200	kardan		1" x 3/8" x 1 3/4"	EG 14	Morgan

XXXX



Løbe nr.	Lampetype	Spænding i volt	Watt	Anvendes i
1	Gasfyldt, imat kuglelampe	24	15	Sidegang, endeperroner, indikator og mærkelamper i personvogne.
2	- - -	24	25	Kupé og kupéafdeling i vogne med 24 V.
3	- - -		40	- - - - -
4	- - dråbeformet	24	25	E og G armaturer i personvogne
5	Soffitlampe Waggon Lits imat	24	10	Reollamper i postvogne Læselamper i 1.klasse. Indikatorlamper f.toilet
6	Philinea-Opal (NES-PL)	24	20	Salonvogn 1. CAR-vognes bar Kapel i ligvogn
7	Autolampe, klar	24	5	Nat/nødbelysning i personvogne med lysrørsbelysning
8	Aeroplanlampe	28	20	Læselampe i 1.kl.vogne
9	Autolampe, matteret	24	15	- i 2.kl. - litra BL
10	Lysrør, gylden de luxe		20	Kupéer 2.kl., toiletter, endeperron og sideg.
11	- , - - -		25	Kupéer 1.kl.
12	- , - - -		40	Kupéer 1.kl., storrumsvogne

Hvis yderligere oplysninger ønskes, kan de søges i "Lamper til rullende materiel", udsendt af mafd.

XXXX



